

## Luminaire

Code 1157W10APP  
Name NEW NATURE LED F 2700K - APP COMPATIBILE

## Measurem.

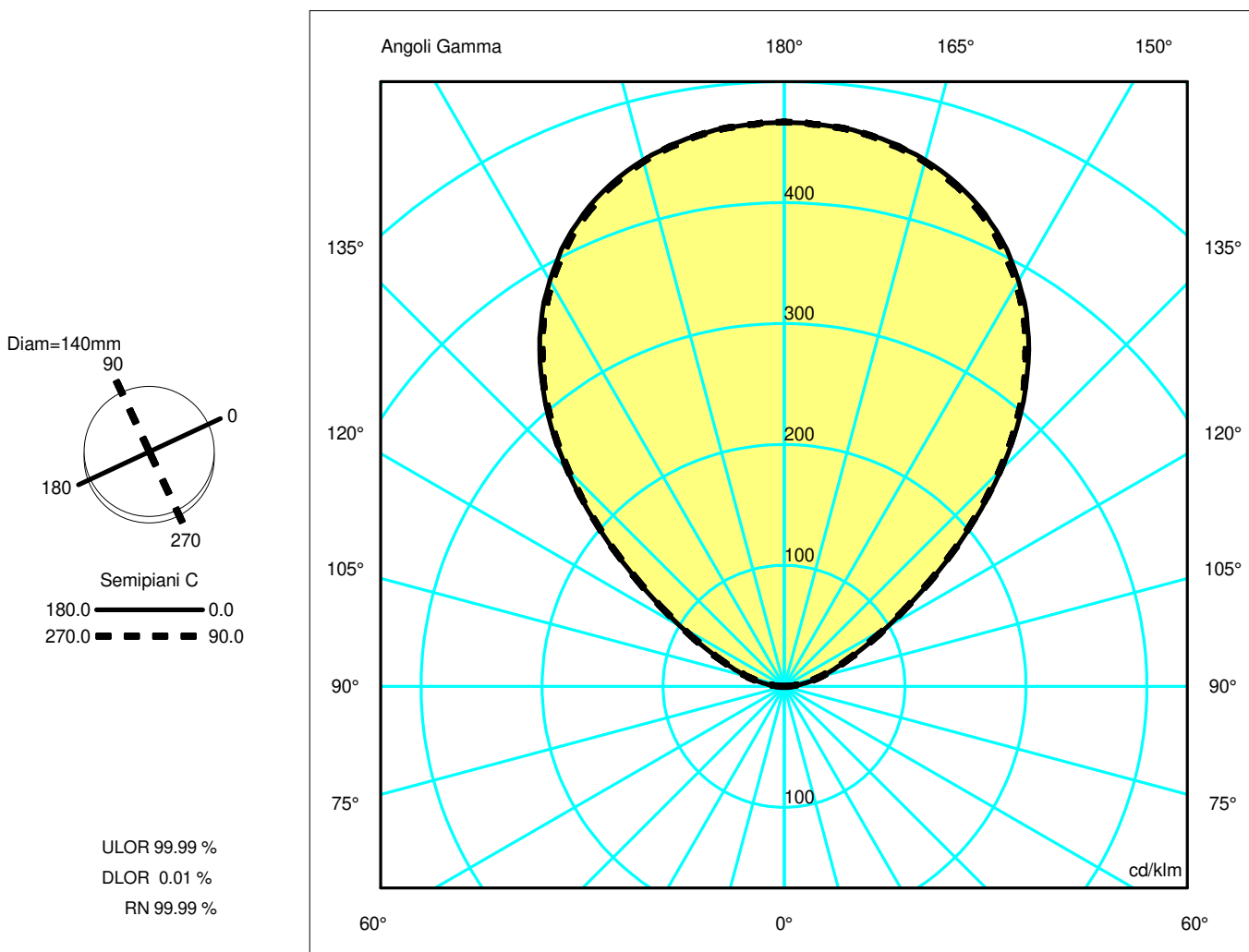
Code FTS1901549  
Name NEW NATURE LED F 2700K - APP COMPATIBILE

Luminaire Flux	3132.00 lm	Luminaire Power	43.00 W	Efficacy	72.84 lm/W	Efficiency	100.00%
Lamps Flux	3132.00 lm	Maximum value	467.02 cd/klm	Position	C=5.00 G=179.00	CG	Double Symmetrical
Round Luminaire		Diam.	140 mm	Height	75 mm	Height	0 mm
Rectangular Luminous Area		Length	55 mm	Width	55 mm		
Horizontal Luminous Area	0.003025 m2			Emitting area on Plane 180°	0.000000 m2		
Emitting area on Plane 0°	0.000000 m2			Emitting area on Plane 270°	0.000000 m2		
Emitting area on Plane 90°	0.000000 m2			Glare area at 76°	0.000732 m2		
Coordinate system	CG	Symmetry Type		Double Symmetrical			
Date	09-05-2016	Maximum Gamma Angle		180			
Measurement Distance	0.00	Measurement Flux		3132.00 lm			

LED Flux=3630,46lm LED Power=38,2W Eff=86% EfcLed=95lm/W EfcLum=73lm/W Ra=90 SDCM=2 L70(6K)=50000h

C.I.E. 0 0 0 0 100  
F UTE 1.00 T

D DIN 5040 --  
B NBN BZ 10



## Luminaire

Code 1157W10APP  
Name NEW NATURE LED F 2700K - APP COMPATIBILE

## Measurerm.

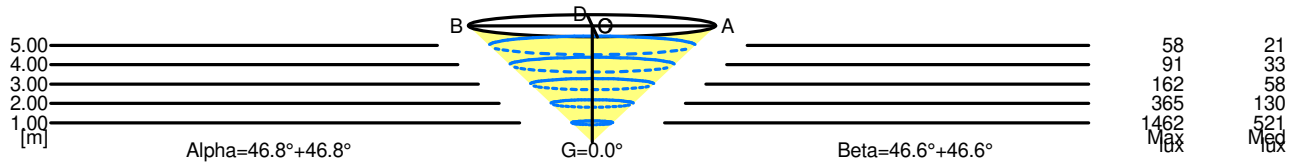
Code FTS1901549  
Name NEW NATURE LED F 2700K - APP COMPATIBILE

Luminaire Flux	3132.00 lm	Luminaire Power	43.00 W	Efficacy	72.84 lm/W	Efficiency	100.00%
Lamps Flux	3132.00 lm	Maximum value	467.02 cd/klm	Position	C=5.00 G=179.00	CG	Double Symmetrical
Round Luminaire		Diam.	140 mm	Height	75 mm	Height	0 mm
Rectangular Luminous Area		Length	55 mm	Width	55 mm		
Horizontal Luminous Area	0.003025 m2			Emitting area on Plane 180°		0.000000 m2	
Emitting area on Plane 0°	0.000000 m2			Emitting area on Plane 270°		0.000000 m2	
Emitting area on Plane 90°	0.000000 m2			Glare area at 76°		0.000732 m2	
Coordinate system	CG	Symmetry Type		Double Symmetrical			
Date	09-05-2016	Maximum Gamma Angle		180			
Measurement Distance	0.00	Measurement Flux		3132.00 lm			
LED Flux=3630,46lm LED Power=38,2W Eff=86% EfcLed=95lm/W EfcLum=73lm/W Ra=90 SDCM=2 L70(6K)=50000h							
C.I.E.	0 0 0 0 100	D DIN 5040		--			
F UTE	1.00 T	B NBN		BZ 10			

### Width at 50.00 % of Max Intensity

H[m]	1.00	2.00	3.00	4.00	5.00	H[m]	1.00	2.00	3.00	4.00	5.00
OA	1.06	2.13	3.19	4.26	5.32	OC	1.06	2.12	3.18	4.24	5.29
OB	1.06	2.13	3.19	4.26	5.32	OD	1.06	2.12	3.18	4.24	5.29

	Luminous Intensities [ cd/klm]									
	0	5	15	25	35	45	55	65	75	85
OA	1461.52	1455.84	1411.23	1301.63	1103.23	796.66	442.35	211.91	99.86	29.09
OB	1461.52	1455.84	1411.23	1301.63	1103.23	796.66	442.35	211.91	99.86	29.09
OC	1461.52	1454.79	1406.62	1293.06	1093.39	789.54	441.70	212.11	100.33	29.05
OD	1461.52	1454.79	1406.62	1293.06	1093.39	789.54	441.70	212.11	100.33	29.05



5.00	10.64	58	21	
4.00	8.51	91	33	
3.00	6.38	162	58	
2.00	4.26	365	130	
1.00	2.13	1462	521	
H[m]	D[m]	Max lux	Med lux	Alpha=46.8°+46.8° G=0.0

5.00	10.59	58	21	
4.00	8.47	91	33	
3.00	6.35	162	58	
2.00	4.24	365	130	
1.00	2.12	1462	521	
H[m]	D[m]	Max lux	Med lux	Beta=46.6°+46.6° G=0.0