

Instructions



# Journey SHY1

## Signe Hytte

### 2018

---

Congratulations with your new Journey lamp, designed in 2018 by Signe Hytte. We hope you will enjoy using this product and follow these instructions to ensure correct installation. If you have any questions or comments, please do not hesitate to contact us by mail on:

[info@andtradition.com](mailto:info@andtradition.com)

# Journey SHY1

## Signe Hytte

### 2018

Please read these instructions carefully and retain them for future reference to ensure that the product is used correctly. For your own safety, please study each step of this instruction manual first. &Tradition is not responsible for any faults or damages caused by not following these instructions correctly. Do not modify this product in any way.

#### Contents

- A Lamp
- B Transformer with interchangeable plugs

#### Tools needed

This lamp can be used both as a table lamp and as a wall lamp. If you choose to install it as a wall lamp the following tools are needed.

- Screws and plugs (for the specific wall type)
- Electric drill
- Screwdriver

#### Safety precautions

- Dispose of plastic bag from packaging and do not allow children to play with it.
- Keep product well out of children's reach.
- The lamp is only intended for interior use.
- Consult a professionally qualified electrician if in any doubt.
- Do not place the cable within reach of small children or anywhere there is a risk of falling over it.

#### Cleaning instructions

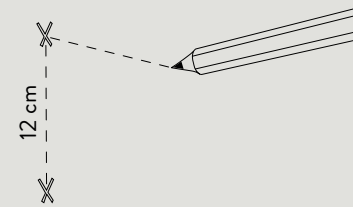
- Wipe surface of lamp with a soft, damp sponge or cloth, and wipe immediately after with a dry cloth.
- Do not use any abrasive cleaning tools such as steel wool, scouring sponges or stiff brushes.
- Never use strong cleaning agents such as white spirit, turpentine, household glass cleaner or cellulose thinners.
- **Mirror colour:** Cleaning of stainless steel should be done only by using a cleaning detergent specifically for stainless steel. Follow the instructions on the packaging. Cleaning agents not developed specifically for stainless steel may permanently damage the surface of the stainless steel and should never be used. For daily care, please only use a dry soft cloth to clean.

For indoor use only  
Built-in LED (non replaceable)  
220-240V - 50 Hz

#### Installation on wall

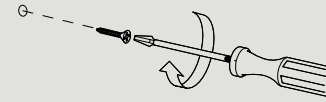
##### Step 1

In order to use the lamp as a wall lamp, two screws or hooks are needed. Choose where the lamp shall be placed on the wall and mark it with a pencil. With a ruler and a spirit level, measure a 12 cm distance in a vertical line and mark where the second screw or hook is to be placed.



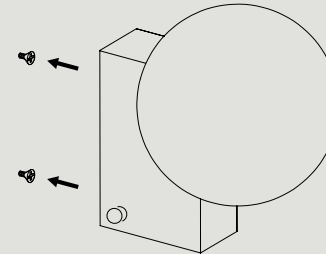
##### Step 2

Drill holes on the marks and insert the correct type of screws and plugs, appropriate for the wall of installation.



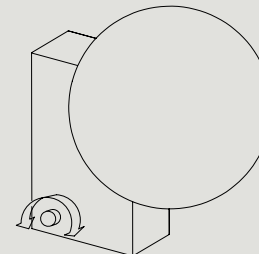
##### Step 3

The lamp is now ready to be installed by placing the holes in the lamp base over the screws.



##### Step 4

Adjust the light intensity to desired level by turning the dimmer on the side



CE   IP20 

**&Tradition®**