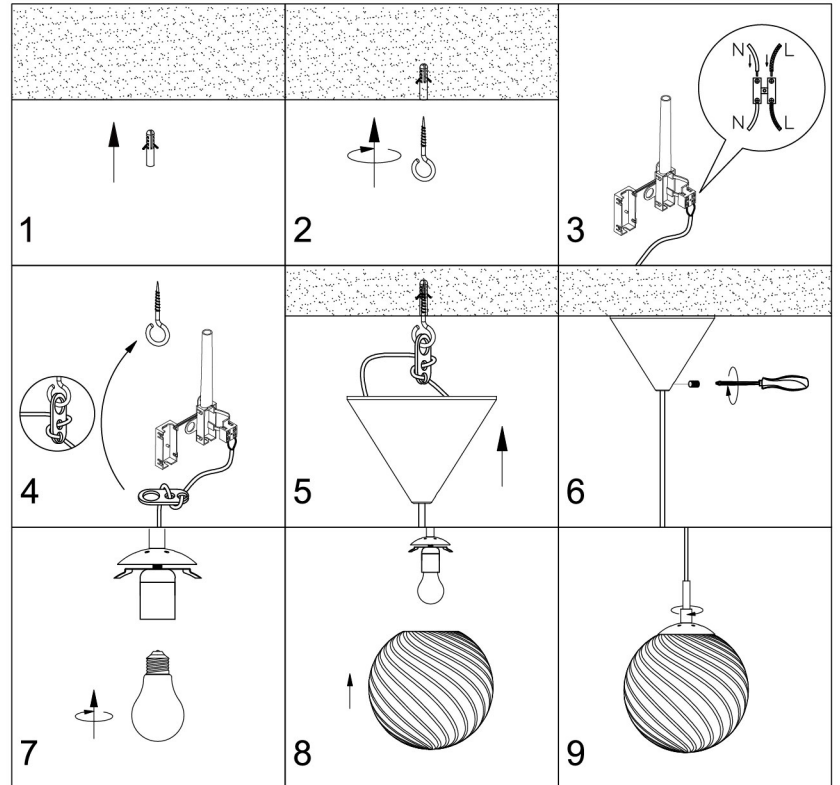
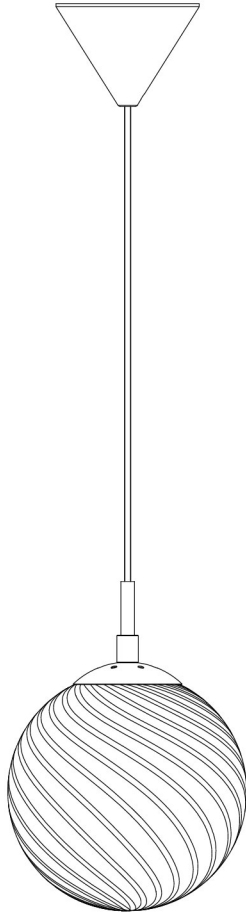


INSTRUCTION MANUAL

Model: Candy ball

halo
design

COPENHAGEN



230V .E27.MAX 25W



INSTRUCTION MANUAL

- 1 Follow the instruction sketch
Følg instruktionen på tegningen
- 2 Make sure power is OFF on the outlet, before beginning the installation
Sikr dig at strømmen er slukket, inden du påbegynder installationen
- 3 Insert the light bulb
Isæt lyskilden
- 4 Go through point 1 to 9 before connecting the lamp to the power
Gennemgå punkt 1 og 9, inden du tilslutter lampen til strømudtaget