



WEVER & DUCRÉ
LIGHTING

LEENS 2.0

311274W5

Project
Type
Notes
Quantity
Date

GENERAL

Wall
Surface
Signal White
IP20
Interior
Indirect 275 lm
Direct 275 lm
Total 550 lm
9003 ^a

LED

3000 K
CRI 90
L95 / 50000 h
3-step binning

OPTICAL

Wide Flood

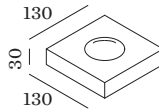
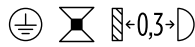
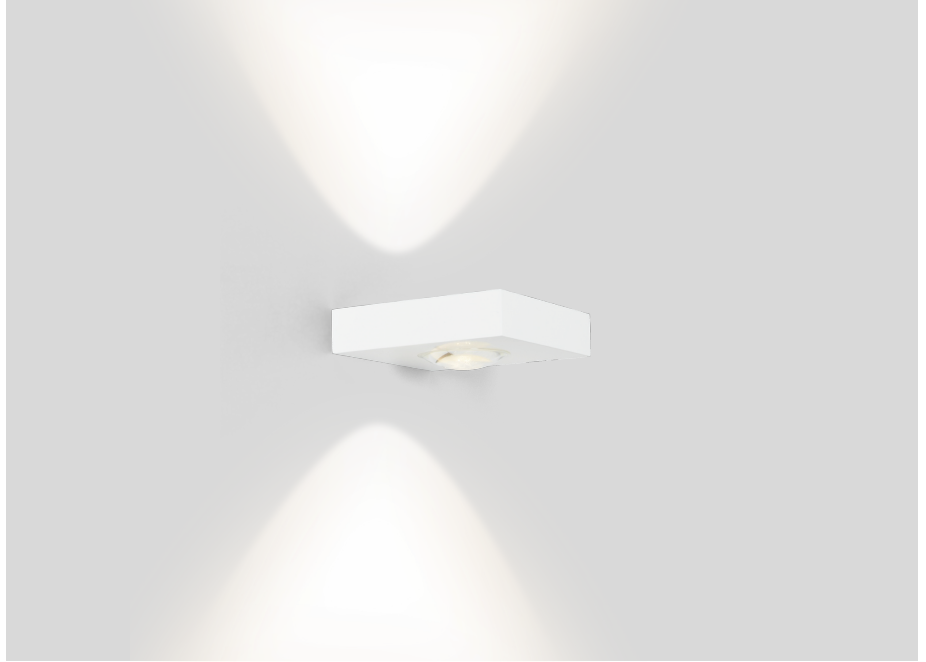
PHYSICAL

Length 130 mm
Width 130 mm
Height 30 mm
0.9 kg

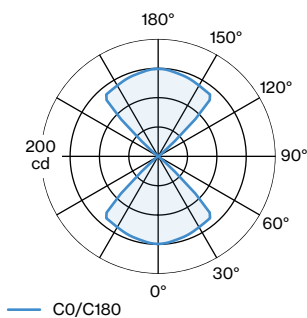
ELECTRICAL

incl. PS phase-cut dim
220 - 240 V
Total connected power 7.5 W
PC1
Safety distance 0.3 m

^a RAL Palette colors may deviate slightly due to production conditions.



LIGHT DISTRIBUTION





WEVER & DUCRÉ
LIGHTING

LEENS 2.0

311274W5

Maintenance Factors

Operating Time [h]	10 000	20 000	30 000	40 000	50 000
LLMF	0.98	0.98	0.98	0.97	0.97
LSF	1	1	1	1	1

MF	$LMF \times RSMF \times LLMF \times LSF$	RSMF ^a	Room Surface Maintenance Factor
MF	Maintenance Factor	LLMF	Lamp Lumens Maintenance Factor
LMF ^a	Luminaire Maintenance Factor	LSF	Lamp Survival Faktor

^a According to "CIE 97, Maintenance of indoor electric lighting systems", 2005, ISBN 3-900-734-34-8. The values must be determined by the planner.