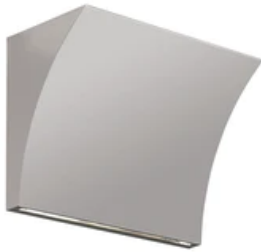


Pochette Up/Down Led

by Rodolfo Dordoni , 2003



Wall lamp providing direct/indirect light. Pressure die-cast Zamak alloy structure, matte gray, shiny white or chrome plated finish. Molded steel, galvanized white wall attachment containing the wall attachment system as well as the electrical devices.



Mounting	Wall
Environment	Indoor
Weight	1.7 Kg
Light sources available	144 x LED 20W 2700K 1707lm CRI90 [i] + 36 LED 1,5W 2700K 37lm CRI90 [i]
Emergency	Without
Voltage	220-240V
Power	21,5W
Battery	No
Supply included	Yes

Materials Zamak

Colors

- F9705020 - Grey
- F9705057 - Chrome
- F9705009 - Glossy White

