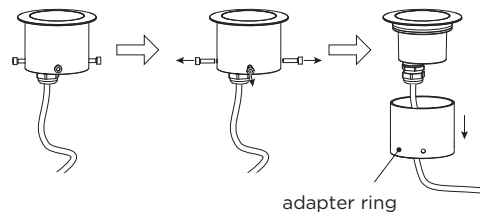
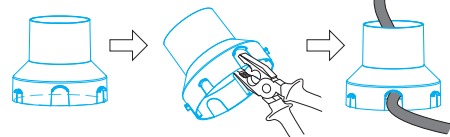


With ground housing

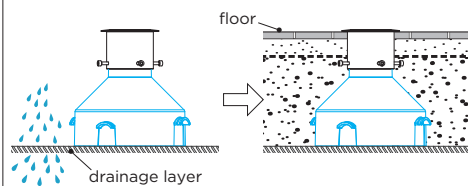


adapter ring

Cut an opening in the ground housing to easier guide the cable sideways.

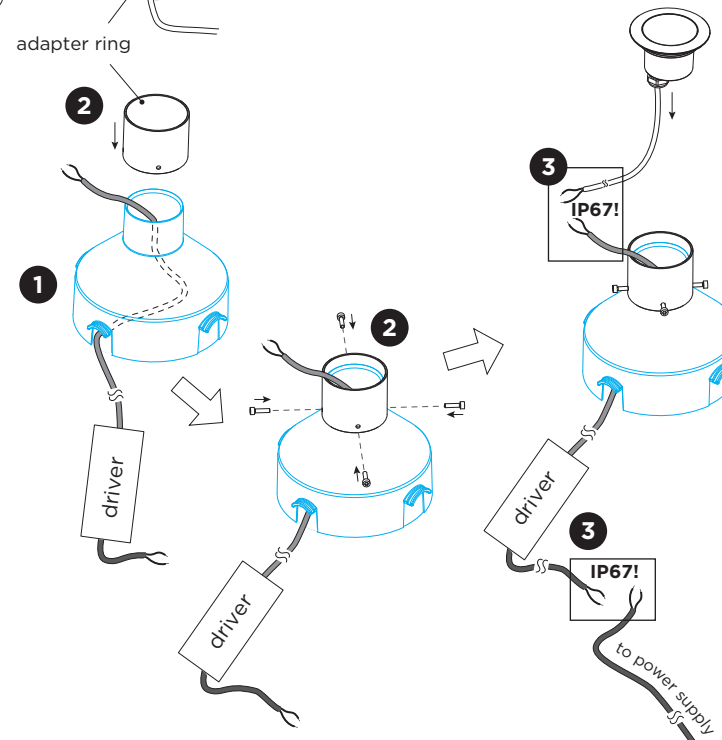
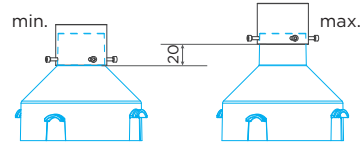


! The luminaire needs to be placed prior to constructing the floor.

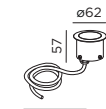


! Drainage layer is necessary.

The position of the adapter is adjustable.



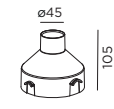
DIMENSIONS



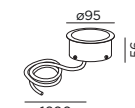
1600
1.0 TRIM



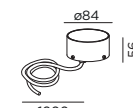
1600
1.0 TRIMLESS



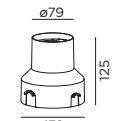
132
GROUND HOUSING



1600
2.0 TRIM



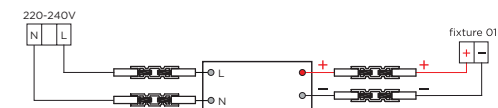
1600
2.0 TRIMLESS



132
GROUND HOUSING

MOUNTING INSTRUCTION

- 1** Before constructing the floor, place the ground housing at the intended position.
- 2** Remove the adapter ring from the luminaire and put it at the top neck of the ground housing and then tighten it with the 4 screws.
- 3 POWER CONNECTION**
Always use a driver according to the specifications of the LED module. Make sure to use a waterproof connection. Please see the detail method in the separate instruction sheet of waterproof connection.



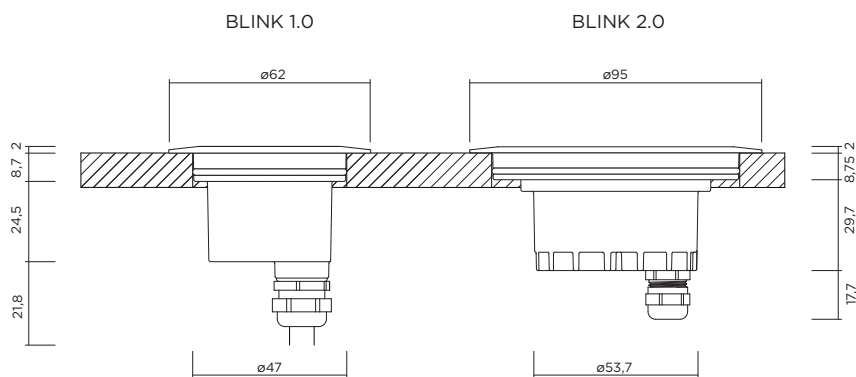
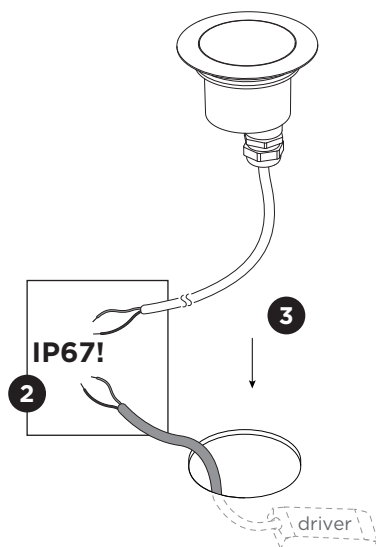
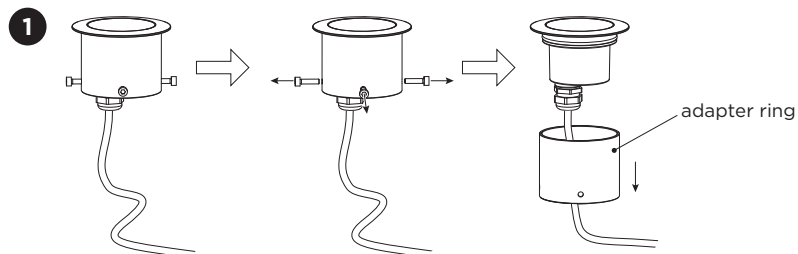
- 4** When the construction of the floor is finished, the fixture will be recessed in the floor.



BLINK

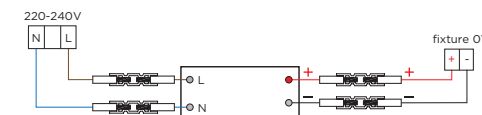
INSTALLATION INSTRUCTIONS | APRIL 2025

Without ground housing
only for 1.0/2.0 TRIM

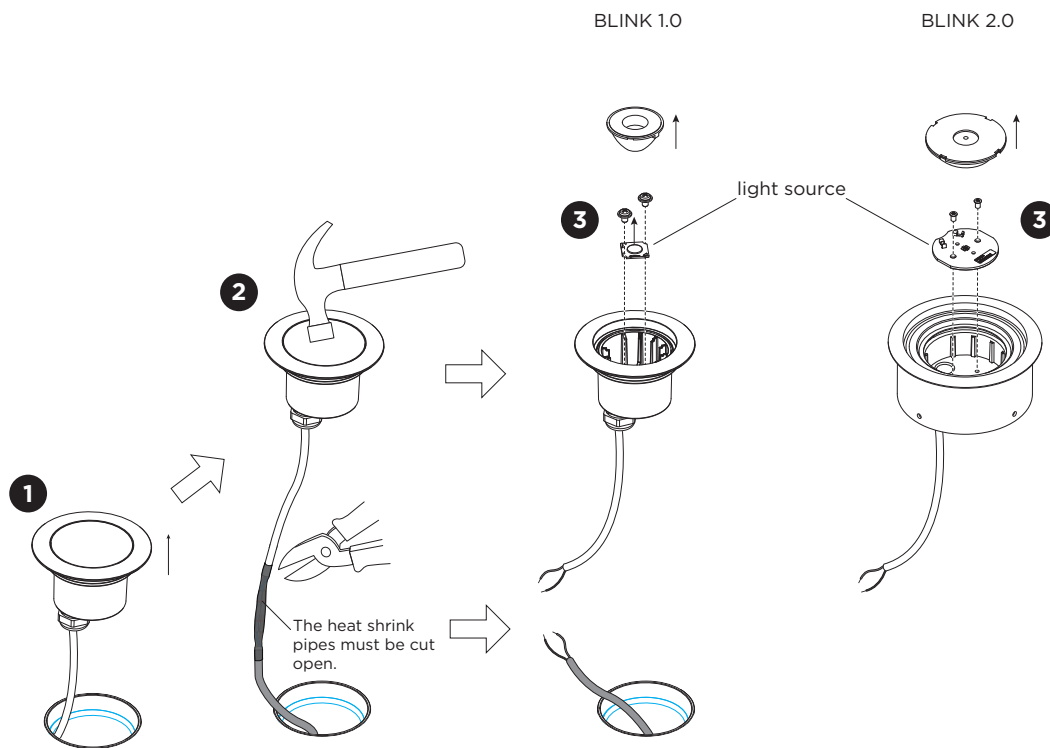


**MOUNTING INSTRUCTION WITHOUT GROUND HOUSING
only for 1.0/2.0 TRIM**

- 1 Remove the adapter ring from the luminaire.
- 2 **POWER CONNECTION**
Always use a driver according to the specifications of the LED module. Make sure to use a waterproof connection. Please see the detail method in the separate instruction sheet of waterproof connection.



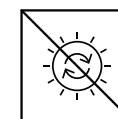
- 3 Place the luminaire into the hole. No tool is needed to fix the luminaire as it will rest on the frame.



DISMOUNTING AND RECYCLING INSTRUCTIONS

Light source

- 1** Pull the luminaire out from the ground hole, loosen cable from the waterproof connection.
- 2** Break the glass.
- 3** Remove the lens and the screws, disconnect the wires and remove the light source.



The light source is not replaceable.

This luminaire contains a light source with the corresponding energy class:

Version	Energy class
BLINK 1.0	
BLINK 2.0	



Use green electricity to light up your luminaire.