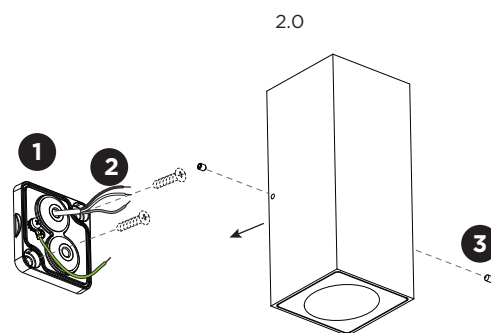
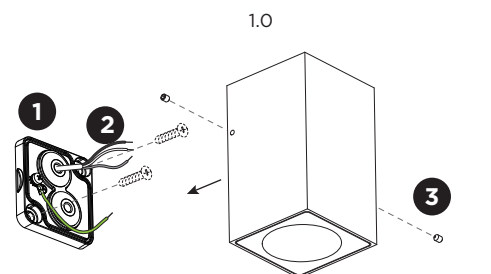
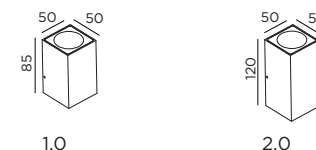


TRAIN

INSTALLATION INSTRUCTIONS | DECEMBER 2022



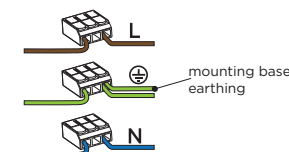
DIMENSIONS



MOUNTING INSTRUCTION

- 1 Remove the mounting base from the luminaire by loosening the side screws and mount it on the wall with screws (screws are not included).

- 2 POWER CONNECTION
Connect to 220-240V.

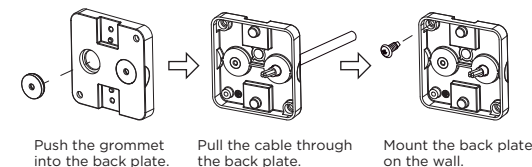


Connect the earth cable.



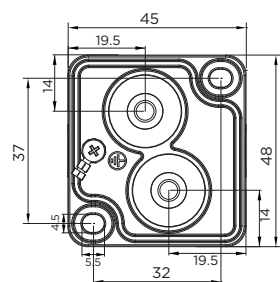
Please use a matching grommet based on the used 220-240V cable and the corresponding type in the overview table.

for example:



- 3 Fix the luminaire on the base with the side screws.

Mounting base:



		A	B	C
CABLE				
TYPE	ROUND H05RN-F H07RN8-F H07RN-F	ROUND H05RN-F	ROUND	ROUND
OUTSIDE Ø	min 6.8mm max 8.9mm	min 5mm max 6.8mm	min 1.5mm max 2.6mm	
CONDUCTION SECTION	2or3x 0.75mm ² 2or3x 1.0mm ² 2or3x 1.5mm ²	2or3x 0.75mm ² 2x 1.0mm ²	0.75mm ² 1.5mm ²	



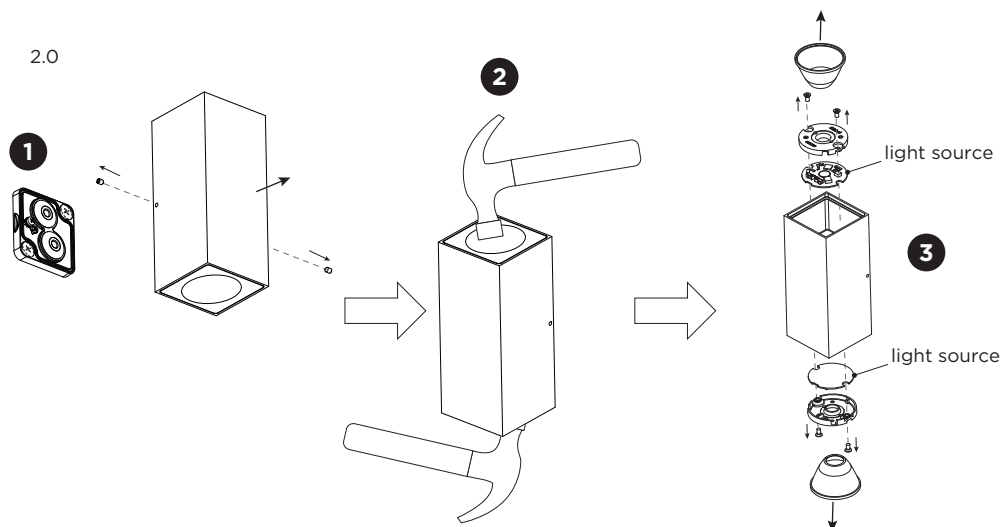
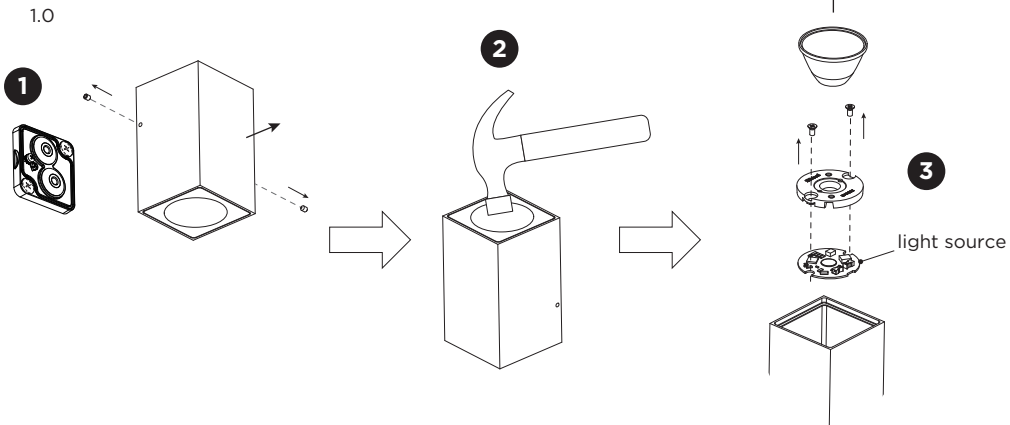
WEVER & DUCRÉ
LIGHTING

WEVER & DUCRÉ BV
Spinnerijstraat 99/21, 8500 Kortrijk, Belgium
weverducre.com

PB19-010-547-00_v4

TRAIN

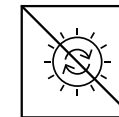
INSTALLATION INSTRUCTIONS | DECEMBER 2022



DISMOUNTING AND RECYCLING INSTRUCTIONS

Light source

- 1 Loosen the side screws, disconnect wires, and remove the fixture from the mounting base.
- 2 Break the glass.
- 3 Take out the components and the light source.



The light source is not replaceable.



This luminaire contains a light source with the energy class F.



WEVER & DUCRÉ
LIGHTING

WEVER & DUCRÉ BV
Spinnerijstraat 99/21, 8500 Kortrijk, Belgium
weverducre.com