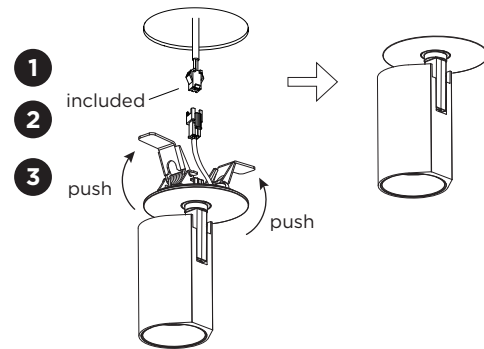
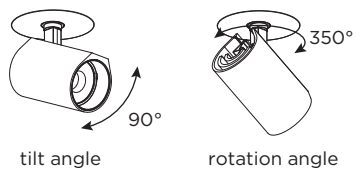
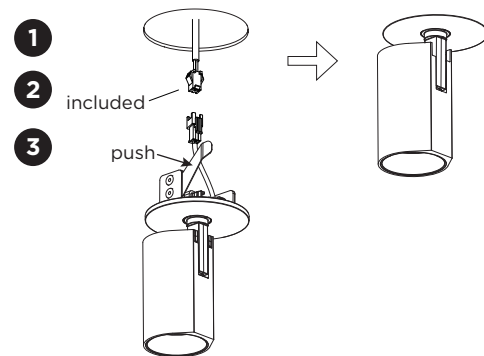


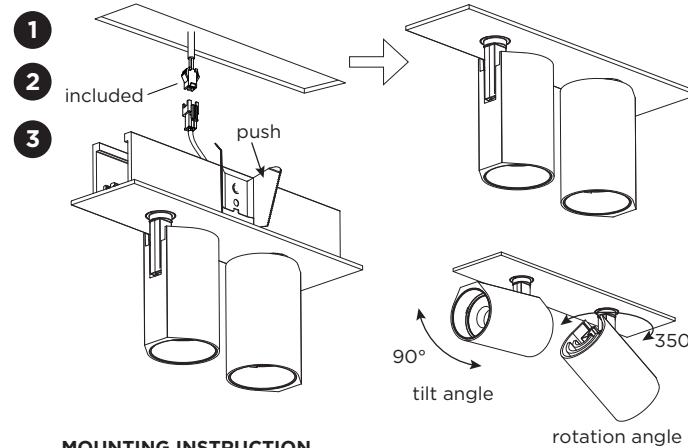
installation for 1.0 LED with wire springs



installation for 1.0 LED with blade springs



installation for 1.1/2.0/3.0

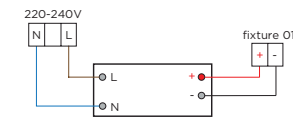


MOUNTING INSTRUCTION

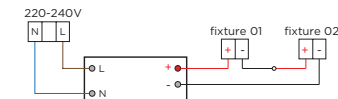
1 Make a hole in the ceiling according to the prescribed dimensions.

2 POWER CONNECTION
Always use a driver according to the specifications of the LED module.

Single connection



Multiple connection

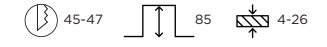
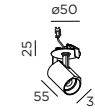


3 For wire springs: push the springs upward and insert the fixture in the ceiling hole.

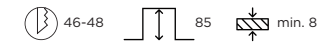
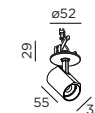
For blade springs: push the blades towards the fixture and insert the fixture in the ceiling hole.

DIMENSIONS

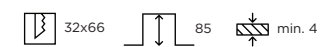
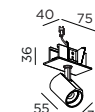
1.0 LED with wire springs



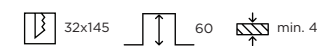
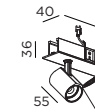
1.0 LED with blade springs



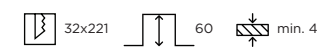
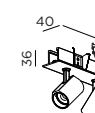
1.1 LED with blade springs



2.0 LED with blade springs



3.0 LED with blade springs

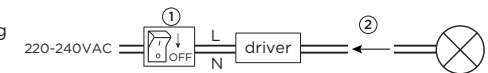


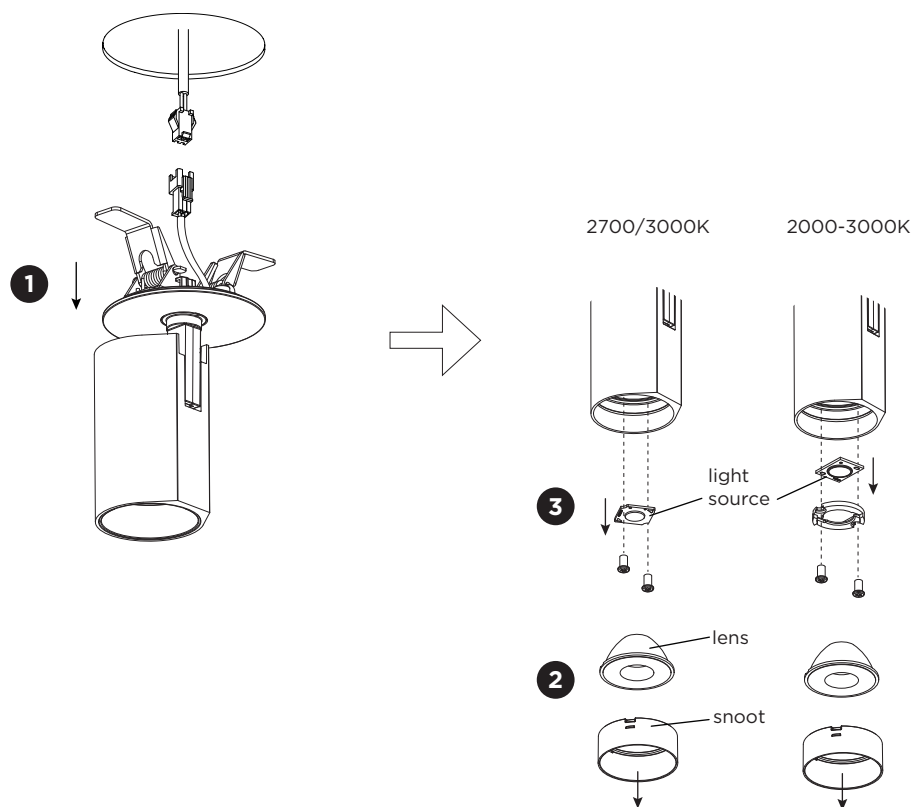
Only to be installed outside arms reach.



Before connecting the luminaire/LED module to the driver please make sure the driver is not powered but disconnected from the mains. The driver can only be powered when the luminaire/LED module is already connected. Disregarding this instruction might damage or even destroy the luminaire/LED module.

Driver must be powered off before connecting the cables.





DISMOUNTING AND RECYCLING INSTRUCTIONS

Light source

- 1 Pull the fixture out from the ceiling and disconnect the connectors.
- 2 Pull out the snoot and lens.
- 3 Disconnect the wires and unscrew the light source to remove it.



The light source is replaceable by Wever & Ducré or by a professional with explicit authorisation. For more information please contact your local Wever & Ducré customer service point.



This luminaire contains a light source with the energy class E.