


# MESH

Design Francisco Gomez Paz

**LUCE  
PLAN**

Type:	Suspension		
Light source:	D86KT	LED 64W 2700K CRI 90 dimnable phase cut 3.583 lm	EEL: A
	D86KW	LED 61W 2700K CRI 90 wireless compatible 3.213 lm	EEL: A
Product use:	Indoor		
Materials:	Structure in steel, lenses in polycarbonate		
Colors:	Black		
Description:	A suspension lamp offering multiple lighting scenarios for personalized aesthetic and functional performance. Based on experimentation with the potential of LEDs, a technology that permits separation into very small units, Mesh is a dramatic and highly innovative project.		



Insulation class: 

Reference code: Structure

**Mesh complete, phase cut version, Ø 100 cm**

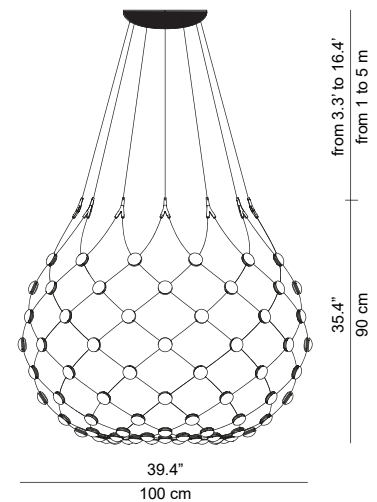
D86KT101	1D86KT101001	cable lenght 1 m
D86KT102	1D86KT102001	cable lenght 2 m
D86KT103	1D86KT103001	cable lenght 3 m
D86KT104	1D86KT104001	cable lenght 4 m
D86KT105	1D86KT105001	cable lenght 5 m

**Mesh complete, wireless version, Ø 100 cm**

D86KW101	1D86KW101001	cable lenght 1 m
D86KW102	1D86KW102001	cable lenght 2 m
D86KW103	1D86KW103001	cable lenght 3 m
D86KW104	1D86KW104001	cable lenght 4 m
D86KW105	1D86KW105001	cable lenght 5 m

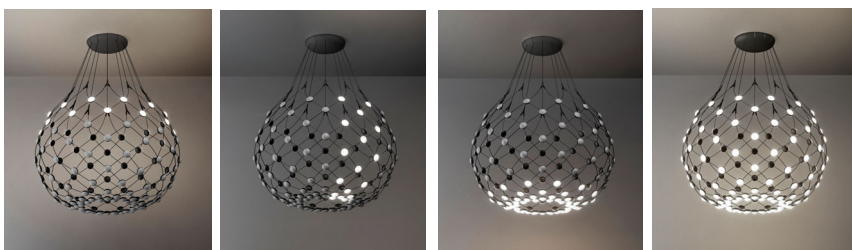
D86/1      1D860/100000    Kit wireless  
to be purchased separately

D86



Ceiling rose: Ø 30 x 7 cm

## SCENARIOS (only with D86/W1 or D86/W5)



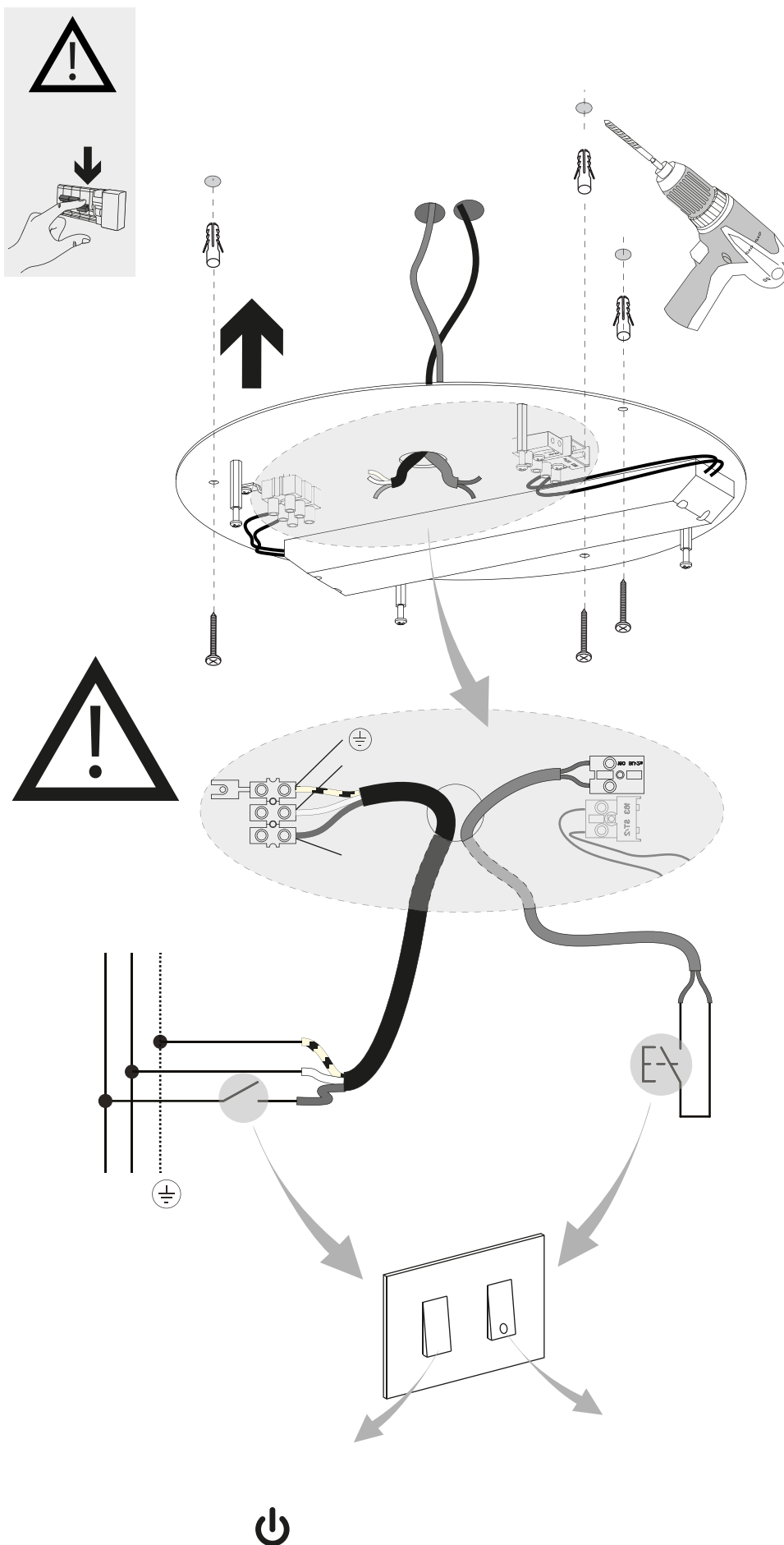
NOTE: The final shape of the luminaire may vary according to the length of the suspension cables.

# MESH

Design Francisco Gomez Paz

LUCE  
PLAN

## HOW TO INSTALL





## D86 MESH DIMMER LIST

for dimmable phase cut version

<b>Brand</b>	<b>Model number (Dimmer)</b>	<b>Dimming Range</b>	<b>Leading/ Trailing edge</b>
ELKO	315GLE	7-100%	Trailing edge
Schneider	SBD315RC	10-100%	Trailing edge
Lutron	RISU-452	8-100%	Trailing edge
Lutron	LLSI-502	15-100%	Leading edge
CLIPSAL	32E450TM	15-100%	Trailing edge
CLIPSAL	32E450LM	18-100%	Leading edge
JUNG	243EX	18-100%	Trailing edge
BerKer	2875	0-100%	Leading edge
Asialink	8082	17-100%	Leading edge
DOYLE & TRATT PRODUCTS LTD	P500	17-100%	Leading edge
SIEMENS	400W	30-100%	Leading edge
VADSBO	LD220	1-100%	Trailing edge
MALMBERGS	HD2200	10-100%	Trailing edge
Eltako	EUD61NPN-UC	0-100%	Trailing edge
Eltako	EUD12NPN-UC	0-100%	Trailing edge