



## 1410/B/NE colibri

design emiliana martinelli, 2013

Wall lamp with adjustable dtructure is made of black anodized aluminium, the diffuser is printed with a satinized polycarbonate. LED light source integrated. Electronic driver inside the base.



## 1410/B/NE colibri

family:	colibri	Body Color:	●
Designers:	Emiliana Martinelli	Diffuser Color:	○
Utilization:	indoor	Body Materials:	aluminium
Typology:	wall	Diffuser Materials:	opal polycarbonate
Certifications:			
Market:	This item is available in the following countries: EUROPE		

### Dimensions

Width:	41 cm
Height:	-
Length:	-
Depth:	18
Diameter:	2,5 - 12 (base) cm

Hole Diameter:	-
Hole Depth:	-
Net weight:	1,2 Kg

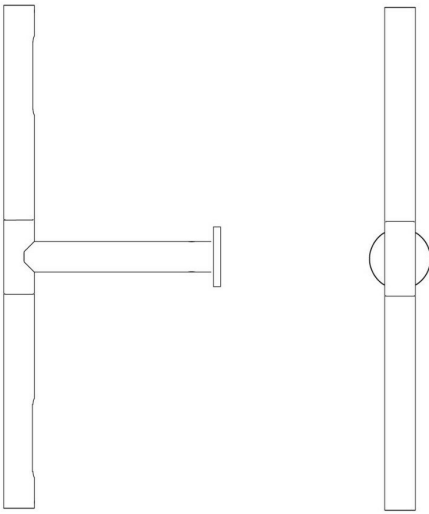
### Light Source

Watt:	20W
Lumen:	1600 lm
Light Source:	led
CRI:	>80
duration:	50000
CCT:	3000K
Energy degree:	A++

### Device Specifications

Type of emission:	direct/indirect	Power cable length:	-	Driver:	included
Power:	17W	Steel cable length:	-	Power supply assembly:	internal
Light output:	555lm	Glow Wire Test:	-	Power supply:	electronic power supply
Beam angle:	-	Impact Resistance:	-	Type of dimming:	-
				Voltage:	230V

technical drawing



Dimensions

Width: 41 cm

Height: -

Length: -

Depth: 18

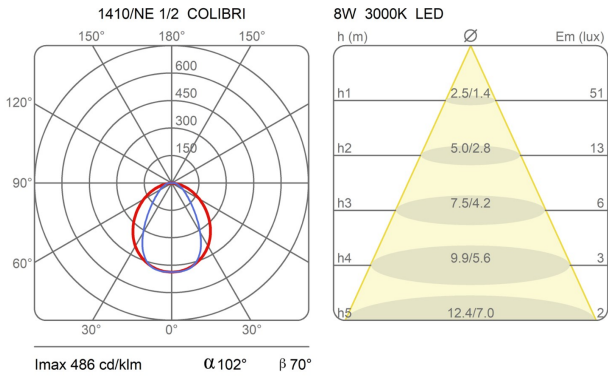
Diameter: 2,5 - 12 (base) cm

Hole Diameter: -

Hole Depth: -

Net weight: 1,2 Kg

photometrics data





**colibrì 1410/B/NE**  
design emiliana martinelli, 2013

