



Paulmann

Safety Instructions

1, 2, 3, 4, 5, 6, 7, 10, 12, 13, 14, 15,
16, 17, 18, 19, 20, 21, 28, 33, 34



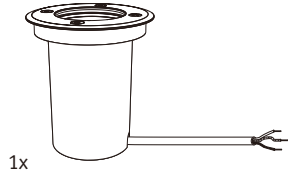
Info

www.paulmann.com

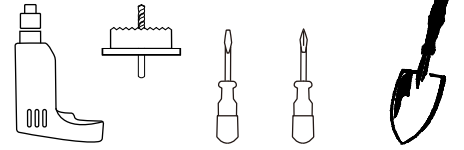
Paulmann Licht GmbH
Quezinger Feld 2
31832 Springe
Germany

www.paulmann.com

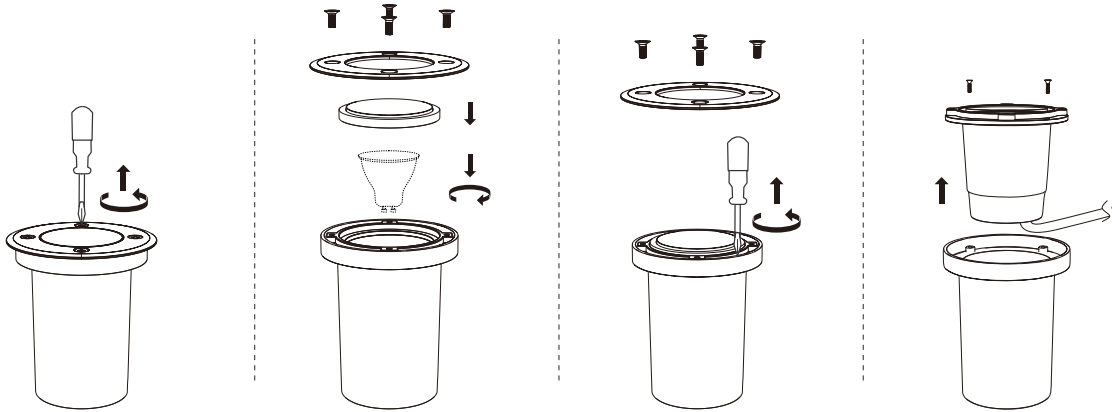
Art.-Nr.: 943.90
(+MA 326) PCIK 04/20



1x



A



Not incl.



GU 10
MAX.10 W



B1 B2



Safety Instructions
Nr. 3, 4, 5, 6, 7

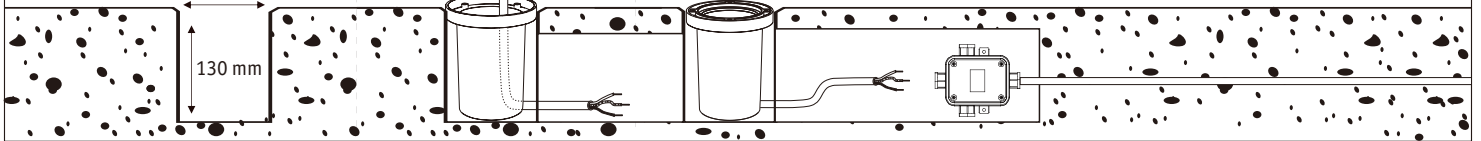
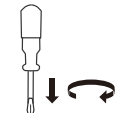
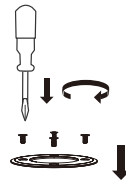
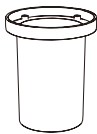
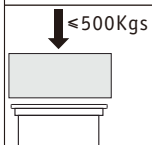
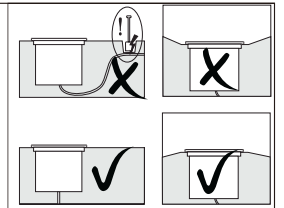


IP65

not incl. Junction-Box



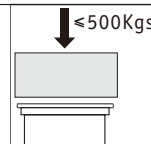
Paulmann
Art.-Nr.: 232



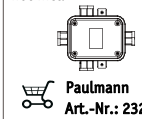
B1 B2



Safety Instructions
Nr. 3, 4, 5, 6, 7

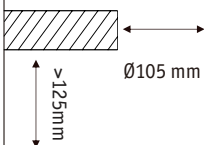
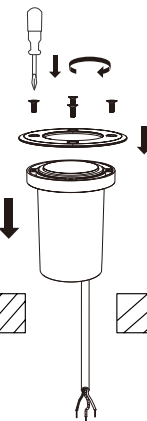
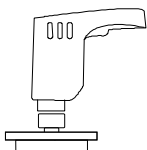


not incl. Junction-Box



Paulmann
Art.-Nr.: 232

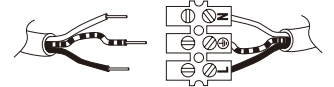
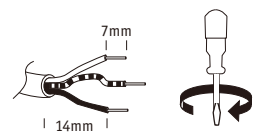
IP65



C



Safety Instructions
Nr. 3, 4, 5, 6



230V~



