

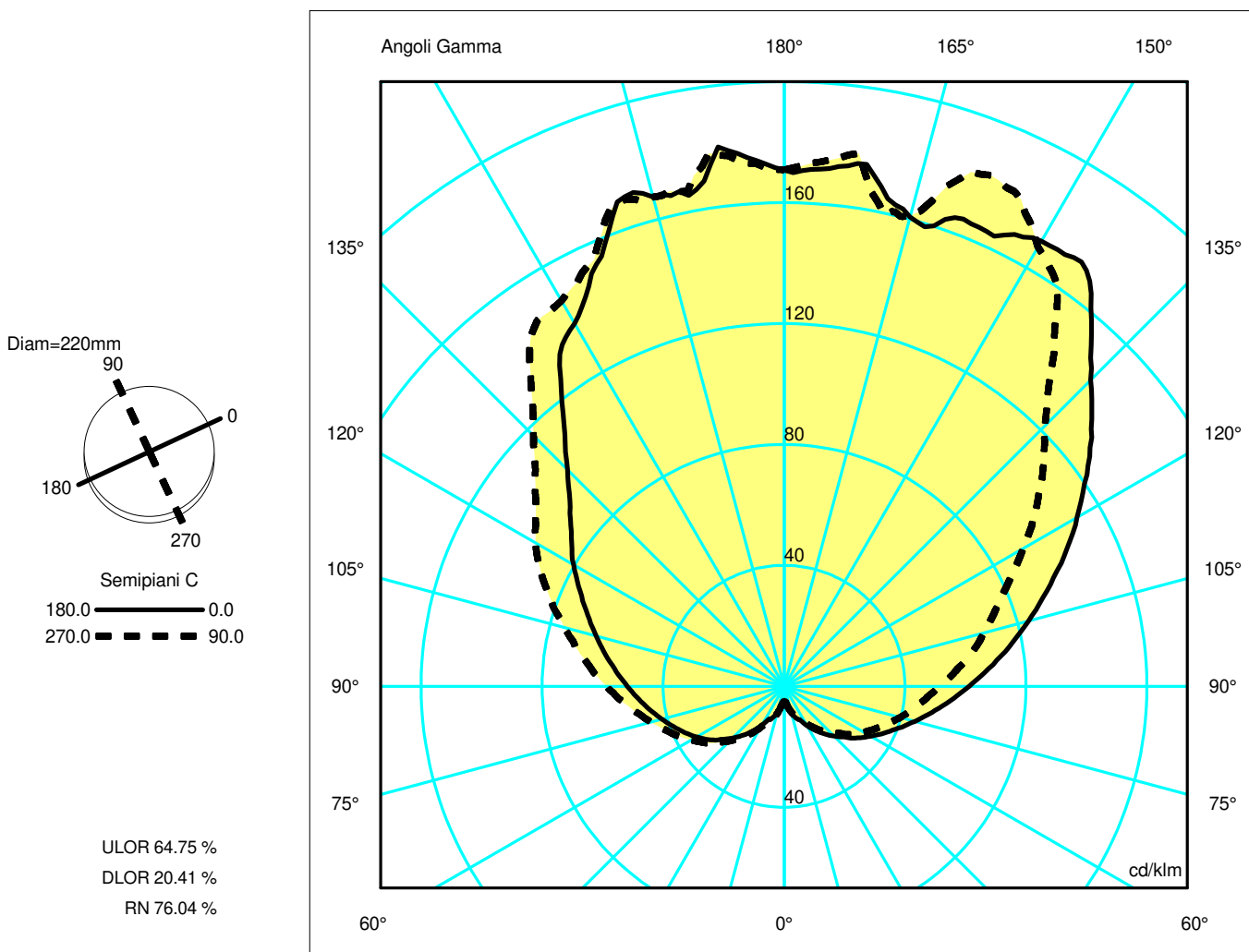
## Luminaire

Code 1410220A  
Name GOPLE F BCO+BIANCO SFUMATO

## Measurem.

Code FTS2000871  
Name GOPLE F BCO+BIANCO SFUMATO

Luminaire Flux	2088.17 lm	Luminaire Power	20.00 W	Efficacy	104.41 lm/W	Efficiency	85.16%
Lamps Flux	2452.00 lm	Maximum value	182.82 cd/klm	Position	C=95.00 G=158.00	CG	Asymmetrical
Round Luminaire Round Luminous Area		Diam. Diam.	220 mm 220 mm	Height Height	410 mm 410 mm		
Horizontal Luminous Area Emitting area on Plane 0° Emitting area on Plane 90°		0.038013 m2 0.090200 m2 0.090200 m2		Emitting area on Plane 180° Emitting area on Plane 270° Glare area at 76°		0.090200 m2 0.090200 m2 0.096717 m2	
Coordinate system Date Measurement Distance		CG 12-07-2018 0.00		Symmetry Type Maximum Gamma Angle Measurement Flux		Asymmetrical 180 2452.00 lm	
Greenplux LCG607150 20W E27 3000K							
C.I.E. F UTE	12 33 62 24 85 --			D DIN 5040 B NBN		D13 BZ 10	



## Luminaire

Code 1410220A  
Name GOPLE F BCO+BIANCO SFUMATO

## Measurerm.

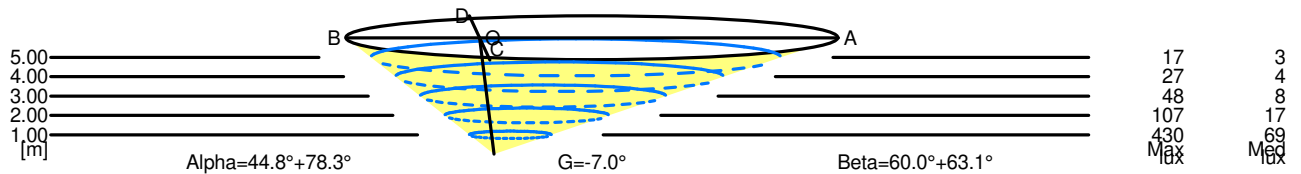
Code FTS2000871  
Name GOPLE F BCO+BIANCO SFUMATO

Luminaire Flux	2088.17 lm	Luminaire Power	20.00 W	Efficacy	104.41 lm/W	Efficiency	85.16%
Lamps Flux	2452.00 lm	Maximum value	182.82 cd/klm	Position	C=95.00 G=158.00	CG	Asymmetrical
Round Luminaire		Diam.	220 mm	Height	410 mm		
Round Luminous Area		Diam.	220 mm	Height	410 mm		
Horizontal Luminous Area	0.038013 m2			Emitting area on Plane 180°		0.090200 m2	
Emitting area on Plane 0°	0.090200 m2			Emitting area on Plane 270°		0.090200 m2	
Emitting area on Plane 90°	0.090200 m2			Glare area at 76°		0.096717 m2	
Coordinate system	CG			Symmetry Type		Asymmetrical	
Date	12-07-2018			Maximum Gamma Angle		180	
Measurement Distance	0.00			Measurement Flux		2452.00 lm	
Greenplux LCG607150 20W E27 3000K							
C.I.E.	12 33 62 24 85			D DIN 5040		D13	
F UTE	--			B NBN		BZ 10	

Width at 50.00 % of Max Intensity

H[m]	1.00	2.00	3.00	4.00	5.00	H[m]	1.00	2.00	3.00	4.00	5.00
OA	3.09	6.17	9.26	12.34	15.43	OC	1.74	3.48	5.23	6.97	8.71
OB	1.15	2.30	3.45	4.60	5.75	OD	1.98	3.97	5.95	7.94	9.92

	Luminous Intensities [ cd/klm]									
	0	5	15	25	35	45	55	65	75	85
OA	418.78	421.79	394.31	403.01	420.20	351.49	299.76	250.67	205.01	166.47
OB	418.78	433.83	411.05	369.42	317.48	248.53	210.58	182.40	157.69	136.60
OC	418.78	428.61	395.73	442.64	386.34	299.02	249.56	201.14	167.96	139.71
OD	418.78	428.12	410.83	376.31	353.95	287.42	245.84	217.42	184.51	156.51



5.00	21.18	17	3		
4.00	16.94	27	4		
3.00	12.71	48	8		
2.00	8.47	107	17		
1.00	4.24	430	69		
H[m]	D[m]	Max lux	Med lux	Alpha=44.8°+78.3°	G=-7.0

5.00	18.63	17	3		
4.00	14.91	27	4		
3.00	11.18	48	8		
2.00	7.45	107	17		
1.00	3.73	430	69		
H[m]	D[m]	Max lux	Med lux	Beta=63.1°+60.0°	G=0.0