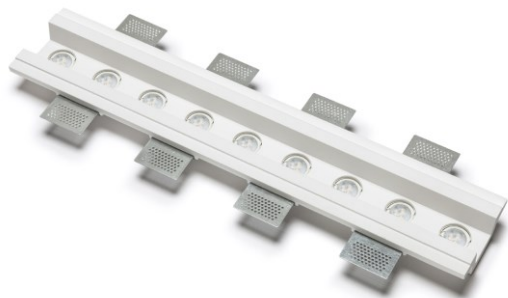


Technical Data Sheet

Last data update

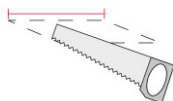
5/9/2019

9010
novantadieci®



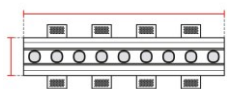
Req. space behind the plasterboard

90mm



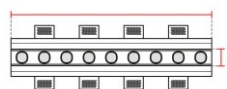
hole on the plasterboard

120x625mm



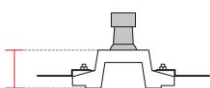
External measures

115x620mm



Measures of the light output

50x620mm



Height without electrical part

45mm



Height including the electrical part

85*mm

Notes on measures

* height including 9010 GU10 H45 mm lamp and lampholder

General notes

CEILING RECESSED LIGHTING

41911-35-L

Recessed Profile / CRISTALY

Surface finish : CRISTALY

GU10 ϕ 35 MAX 9x5W / 240V

Model

Code	41911
Product family	CEILING RECESSED LIGHTING
Type	Recessed Profile

Material/Surface finish

Code	004
Material	CRISTALY
Surface finish	CRISTALY

Electrical part

Code	35
Type	GU10 ϕ 35
Power	MAX 9x5W
Tension	240V
Light Output	-----
Colour Temperature	-----
CRI	-----

Light Output of the lamp

Dimmable NO

Power Supply

Tension

Connection

2 Silicon cables

Cover

General Data

Protection Index	IP20
Isolation Class	II
Weight [Kg]	2.9
Country of production	MADE IN ITALY
Mounting instruction	025.584_9010

Installation

Multisize system	SI
Position	Wall/Ceiling lighting

Packaging

Type	White american Box
Measures AxBxH	760x240x210mm
Gross Weight [Kg]	3.6852
Master carton	NO
Quantity of articles	
Measures AxBxH	

Technical Data Sheet

41911-35-L

9010
novantadieci®

Fotometric Data

Electrical part
Power
Light Output lm
Colour Temperature
CRI

Lamp Light Output %
Light Output of the lamp
Beam Angle
Beam Inclination

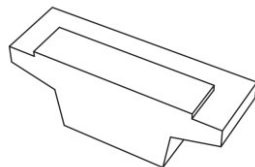
Illuminance

Accessories

Other Accessories



Code L007
Description 20-240V
Notes



Code 4191T-00
Description End Cap
Notes