

TOP VIEW / SECTION A-A

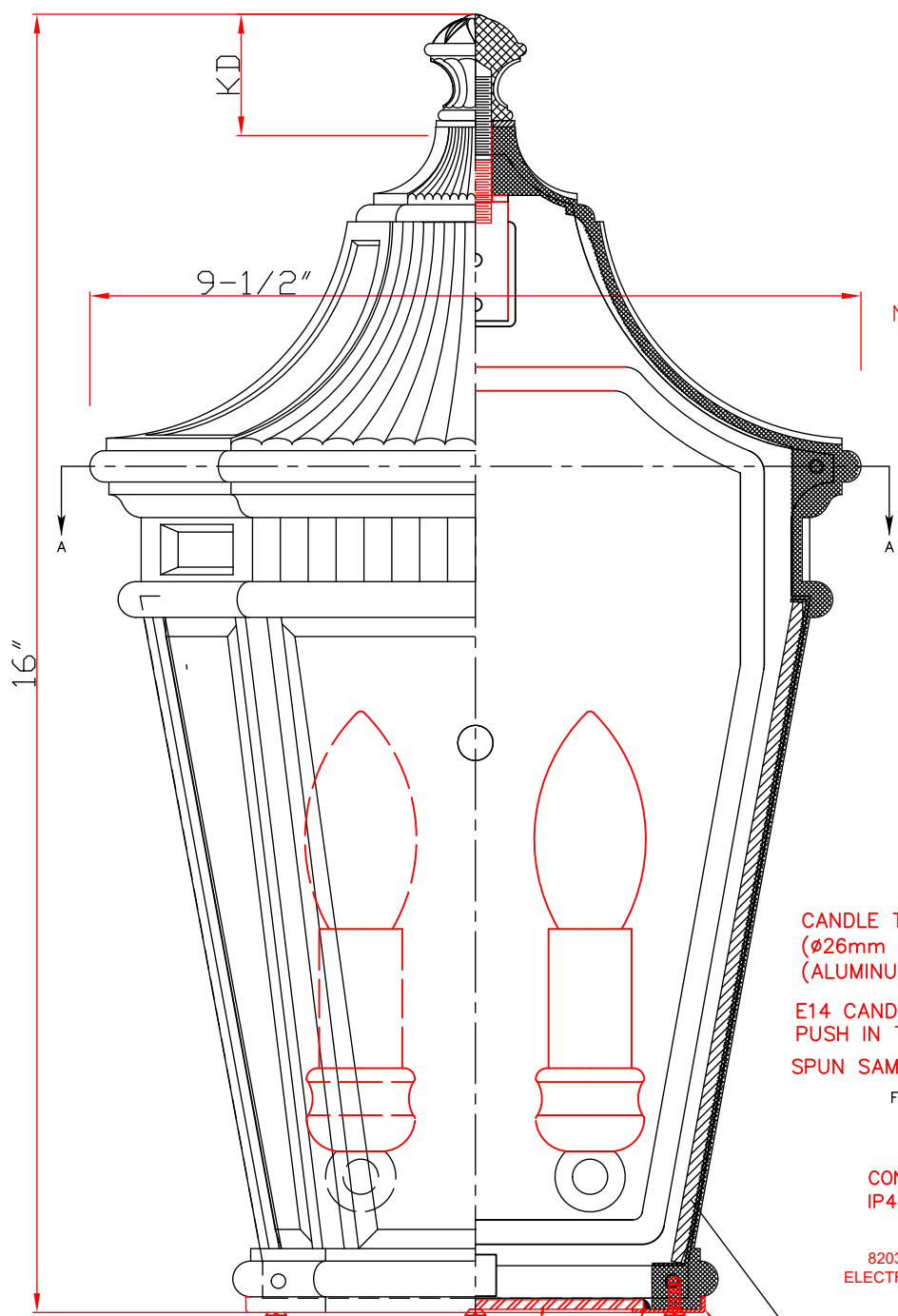
NEW N7196 SMALL 7.5mm SIDE,  
10mm TOP & BOTTOM BEVELED  
5mm THICK GLASS PANEL  
(SAME AS M692-9.5WB)  
(2)

NEW N7169 DIE CAST ALUMINUM  
FINIAL  
(SAME AS M692-8WB)

RUBBER WASHER (BLACK)

NEW N7861 DIE CAST ALUMINUM  
FULL FIXTURE FRAME

NEW STAMPED BACK PLATE



FRONT VIEW

CLEAR TEMPERED GLASS T=3.0

SILICONE GEL

WOODEN SCREW(2)  
M4\*38mm

INSTALLATION PLATE

PLASTIC BOLT(2)

9-9/16" In.

3/4"

2/60W.

CANDLE TUBE  
(Ø26mm X 66mm LENGTH)  
(ALUMINUM) (3)

E14 CANDLE LAMPHOLDER  
PUSH IN TERMINALS

SPUN SAME AS FE OL3001

FLAT ROUND WASHER

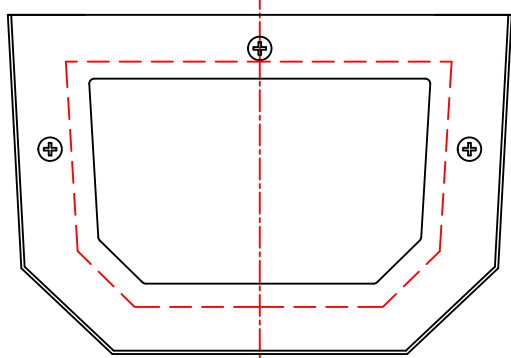
CONNECT THE LINE BOX  
IP44 (76\*39\*H15MM)

8203 YY-101 FEP 180°C 300/500V 0.75MM²  
ELECTRIC WIRE & GROUND WIRE 8"IN LONG:  
FROM END OF BACK PLATE

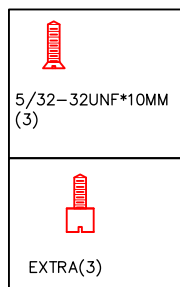
ALL FASTENERS BEHIND  
BACKPLATE MUST BE SEALED  
AROUND WITH SILICONE  
EXISTING ARM BACK JOINER -  
NEW N7201 LARGE 10mm BEVELED 5mm  
THICK GLASS PANEL  
(SAME AS M692-9.5WB) (3)  
FINISH: CLEAR BEVELED GLASS  
CORRECTED FINISH:

SIDE CUT VIEW

RELAMPING LABEL:  
Max 60W (42W) E14



STAMPED STEEL T=1.0MM



MURRAY FEISS IMPORT CORP.  
125 ROSE FEISS BLVD., BRONX, NY 10454, USA  
PHONE: 1-718-292-2029 FAX: 1-718-401-2451

WARNING:  
THIS DRAWING IS PROPRIETARY TO MURRAY FEISS IMPORT CORP. AND IS PROTECTED UNDER THE  
COPYRIGHT AND/OR PATENT LAWS. ANY UNAUTHORIZED USE WILL SUBJECT YOU TO CRIMINAL  
AND CIVIL PENALTIES AND PROSECUTION TO THE FULL EXTENT OF THE LAW.

© MURRAY FEISS IMPORT CORP. / PATENT PENDING  
2006

DRAWN/ REVISED:  
ZR 12/15/2014  
ZR 05/20/2015

HEIGHT: 16"  
WIDTH: 9-1/2"  
EXTENSION:  
MOUNT TO TOP:  
9-1/2"  
SHADE TYPE: CLEAR BEVELED GLASS  
MATERIAL: ALUMINUM, GLASS, STEEL  
STYLE:  
COORD:

LAMPING:  
(2) Max 60W (42W) E14

FINISHES:  
GBZ, BK

STYLE # :  
FE OL5403

INTRO. DATE:

DRAWING #:

DESIGN BY:

VENDOR:  
ZR

M692-9.5 POCKET