

**Luminaria**

Código A704-015-15-30K  
 Nombre AMBROSIA A 60 LEFT MATT GOLD 30K

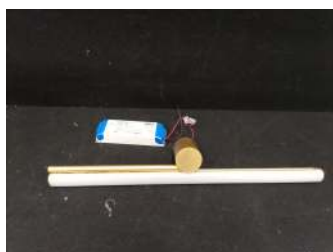
**Ensayo**

Código CL041A22F001GE2  
 Nombre AMBROSIA A 60 LEFT MATT GOLD 30K

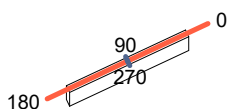
Flujo Luminaria	1025.90 lm	Potencia Luminaria	12.21 W	Eficacia	84.03 lm/W	Eficiencia	100.00%
Flujo Fuentes de luz	1025.90 lm	Valor Máximo	226.92 cd	Posición	C=0.00 G=0.00	CG	Bisimétrico
Luminaria Rectangular	Longit.	34 mm	Anchura	610 mm	Altura	34 mm	
Área Luminosa Rectangular	Longit.	34 mm	Anchura	600 mm	Altura	34 mm	
Área Luminosa Horizontal		0.020400 m2		Área Emisión sobre Pl. 180°		0.001156 m2	
Área Emisión sobre Pl. 0°		0.001156 m2		Área Emisión sobre Pl. 270°		0.020400 m2	
Área Emisión sobre Pl. 90°		0.020400 m2		Área de deslumbramiento a 76°		0.006057 m2	
Sist. de Coorden.	CG		Tipo de Simetría		Bisimétrico		
Fecha	07-09-2022		Máximo Ángulo Gamma		180		
Distancia de Ensayo	6.44		Flujo de Ensayo		1025.90 lm		
Operador	Asselum T2		Tensión Nominal		230.12 V		
Temperatura	25.10 °C		Corriente Nominal		0.06 A		
Humedad	60.70 %		Fotocélula		Czibula Grundmann		
Notas							

**Fuentes de luz de la Luminaria**

Familia	Código LED	Nombre LED 24V	Flujo [lm]	Pot. [W]	Cant.
C.I.E.	38 66 86 80 100	D DIN 5040	1025.90	12.21	1
F UTE	0.80 H + 0.20 T	B NBN	B21 BZ 6		

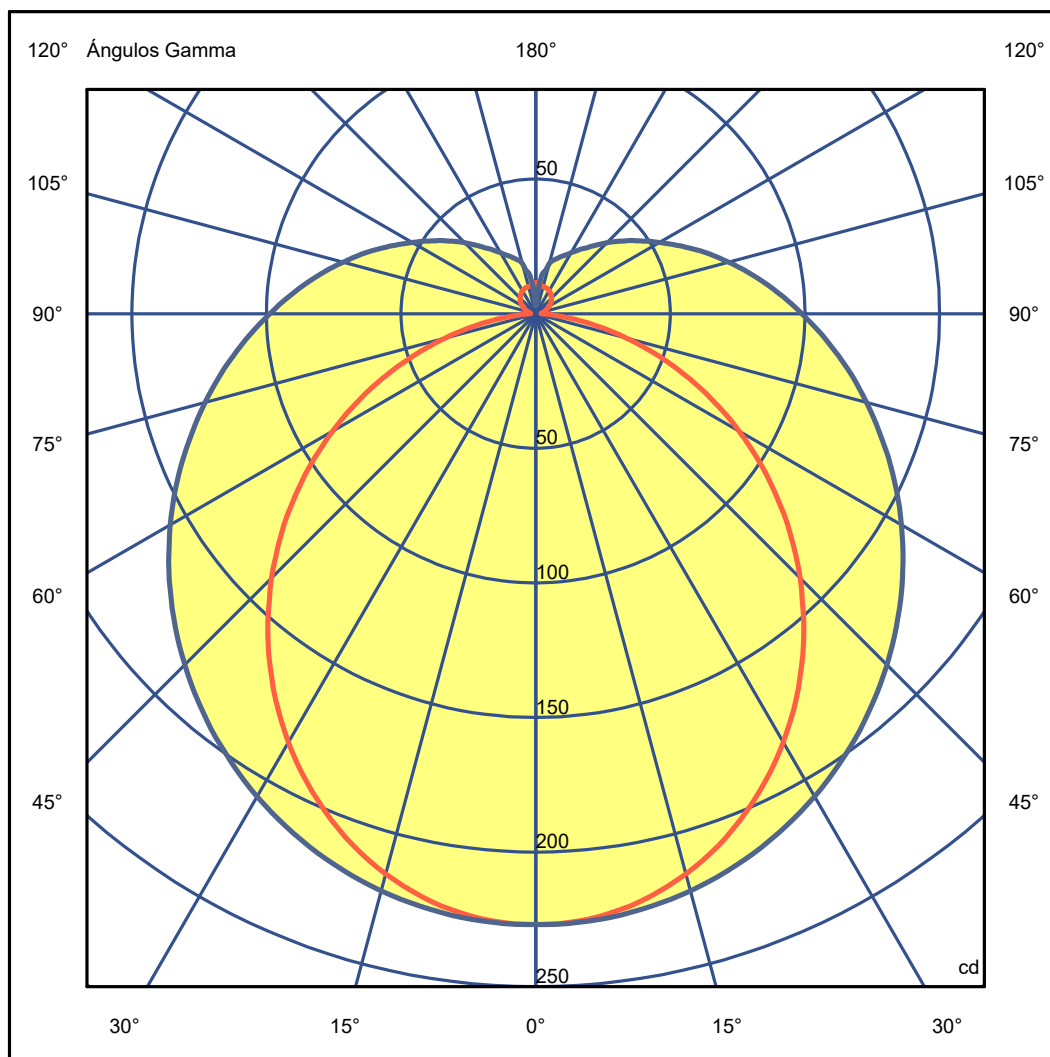


34mm x 610mm



Semiplanos C  
 180.0 — 0.0  
 270.0 — 90.0

ULOR 20.11 %  
 DLOR 79.89 %  
 RN 20.11 %



**Luminaria**

Código A704-015-15-30K  
 Nombre AMBROSIA A 60 LEFT MATT GOLD 30K  
 Ensayo  
 Código CL041A22F001GE2  
 Nombre AMBROSIA A 60 LEFT MATT GOLD 30K

Flujo Luminaria	1025.90 lm	Potencia Luminaria	12.21 W	Eficacia	84.03 lm/W	Eficiencia	100.00%
Flujo Fuentes de luz	1025.90 lm	Valor Máximo	226.92 cd	Posición	C=0.00 G=0.00	CG	Bisimétrico

**Tabla de Intensidad Luminosa cd      Tabla 1/1**

	C 0.00	C 15.00	C 30.00	C 45.00	C 60.00	C 75.00	C 90.00
G 0.0	226.92	226.92	226.92	226.92	226.92	226.92	226.92
G 2.5	226.62	226.61	226.66	226.67	226.77	226.77	226.83
G 5.0	225.67	225.65	225.85	225.95	226.22	226.33	226.40
G 7.5	224.03	224.12	224.49	224.83	225.27	225.53	225.73
G 10.0	221.80	221.94	222.51	223.19	223.98	224.49	224.73
G 12.5	218.81	219.23	220.05	221.15	222.38	223.08	223.45
G 15.0	215.39	215.88	217.07	218.64	220.29	221.43	221.90
G 17.5	211.46	211.99	213.56	215.69	217.93	219.47	220.06
G 20.0	206.83	207.65	209.67	212.45	215.23	217.17	217.95
G 22.5	201.70	202.63	205.22	208.69	212.15	214.62	215.57
G 25.0	196.08	197.32	200.53	204.70	208.85	211.81	212.94
G 27.5	190.18	191.51	195.31	200.19	205.22	208.77	210.08
G 30.0	183.74	185.42	189.82	195.61	201.37	205.44	207.07
G 32.5	177.04	178.94	184.05	190.55	197.32	201.89	203.77
G 35.0	169.93	172.11	177.85	185.42	192.93	198.18	200.16
G 37.5	162.50	165.02	171.57	180.04	188.53	194.22	196.59
G 40.0	154.92	157.56	164.86	174.40	183.64	190.10	192.55
G 42.5	146.72	150.09	158.29	168.60	178.88	185.78	188.62
G 45.0	138.84	142.41	151.39	162.82	173.86	181.46	184.39
G 47.5	130.43	134.46	144.41	156.77	168.72	176.90	180.05
G 50.0	122.14	126.41	137.46	150.77	163.62	172.21	175.61
G 52.5	113.44	118.39	130.24	144.70	158.23	167.46	171.04
G 55.0	104.75	110.22	123.23	138.66	152.96	162.52	166.38
G 57.5	95.91	102.05	116.19	132.60	147.65	157.70	161.59
G 60.0	87.20	93.96	109.17	126.66	142.30	152.75	156.79
G 62.5	78.36	85.88	102.37	120.63	137.06	147.73	151.95
G 65.0	69.54	77.82	95.59	114.83	131.65	142.70	146.94
G 67.5	60.64	70.05	89.17	109.18	126.49	137.70	142.02
G 70.0	51.96	62.30	82.66	103.50	121.25	132.66	136.95
G 72.5	43.35	55.07	76.62	98.13	116.14	127.66	132.08
G 75.0	35.13	47.95	70.84	92.85	111.12	122.73	127.21
G 77.5	27.26	41.45	65.37	87.85	106.23	117.90	122.34
G 80.0	19.88	35.46	60.28	82.98	101.51	113.03	117.59
G 82.5	13.46	30.27	55.40	78.39	96.75	108.32	112.68
G 85.0	7.98	25.67	51.11	73.95	92.31	103.70	108.02
G 87.5	4.51	21.85	47.09	69.83	87.85	99.18	103.36
G 90.0	2.63	18.63	43.50	65.83	83.68	94.74	98.86
G 92.5	1.96	15.91	40.18	62.09	79.67	90.44	94.53
G 95.0	2.11	13.82	37.14	58.48	75.70	86.20	90.29
G 97.5	2.30	12.18	34.33	55.11	71.96	82.13	86.13
G100.0	2.60	11.02	31.75	51.83	68.19	78.15	81.99
G102.5	2.92	10.21	29.39	48.65	64.71	74.23	78.08
G105.0	3.23	9.55	27.28	45.68	61.19	70.47	74.16
G107.5	3.63	9.05	25.42	42.84	57.79	66.78	70.40
G110.0	4.01	8.75	23.71	40.31	54.57	63.20	66.79
G112.5	4.42	8.64	22.07	37.96	51.38	59.68	63.03
G115.0	4.83	8.76	20.58	35.77	48.50	56.35	59.56
G117.5	5.29	9.10	19.34	33.57	45.69	53.13	56.17
G120.0	5.77	9.50	18.46	31.61	43.21	50.23	53.02
G122.5	6.22	9.95	17.83	29.89	40.78	47.44	50.12
G125.0	6.71	10.36	17.46	28.39	38.43	44.87	47.22
G127.5	7.13	10.81	17.23	26.93	36.18	42.38	44.68
G130.0	7.52	11.29	17.05	25.61	34.13	40.07	42.07
G132.5	7.87	11.79	16.98	24.50	32.09	37.83	39.73
G135.0	8.24	12.31	16.97	23.61	30.20	35.66	37.32
G137.5	8.56	12.83	16.99	22.79	28.67	33.43	34.95
G140.0	8.83	13.26	16.99	22.08	27.36	31.39	32.89
G142.5	9.13	13.66	16.99	21.46	26.11	29.66	30.96
G145.0	9.44	13.99	17.03	20.92	25.02	28.07	29.31
G147.5	9.70	14.26	17.15	20.49	23.95	26.61	27.68
G150.0	9.93	14.35	17.28	20.09	23.10	25.25	26.20
G152.5	10.10	14.04	17.20	19.64	22.35	24.00	24.80
G155.0	10.24	13.45	16.44	18.91	21.60	22.94	23.71
G157.5	10.33	12.82	15.87	18.10	20.74	21.96	22.70
G160.0	10.42	12.15	14.48	16.86	19.61	20.90	21.67
G162.5	10.46	11.61	13.20	15.83	18.43	19.18	20.66
G165.0	10.49	11.23	12.08	14.23	16.82	17.65	19.39
G167.5	10.53	10.98	11.26	12.22	14.59	16.15	16.40
G170.0	10.44	10.85	10.76	11.09	12.11	13.09	15.51
G172.5	10.73	11.04	10.92	9.78	9.74	11.08	12.58
G175.0	10.99	11.18	10.99	9.39	7.76	7.79	7.32
G177.5	11.65	11.66	11.08	9.83	7.16	5.66	2.83
G180.0	8.83	8.83	8.83	8.83	8.83	8.83	8.83

**Luminaria**

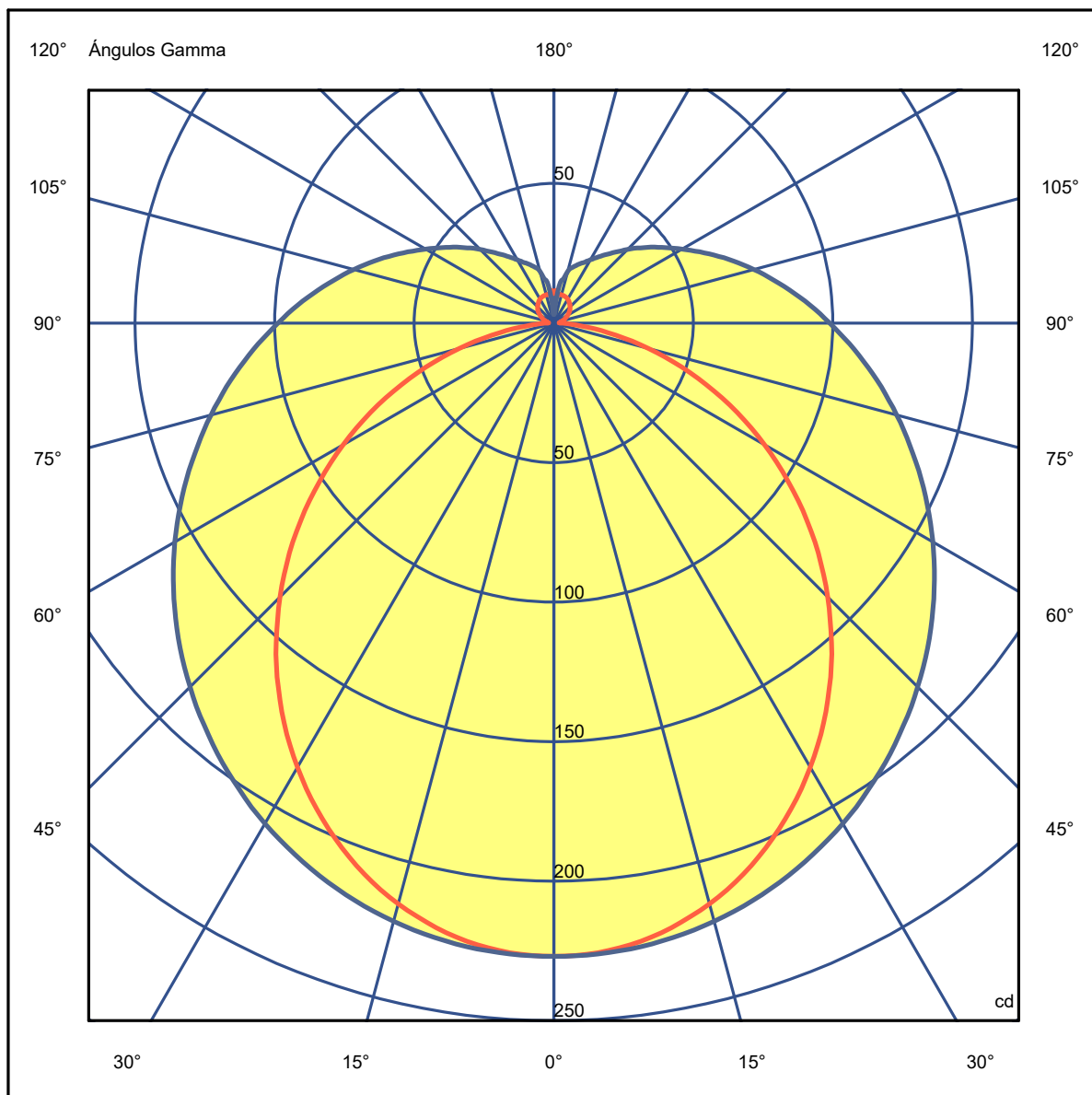
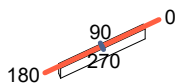
Código A704-015-15-30K  
Nombre AMBROSIA A 60 LEFT MATT GOLD 30K  
Ensayo  
Código CL041A22F001GE2  
Nombre AMBROSIA A 60 LEFT MATT GOLD 30K

Flujo Luminaria	1025.90 lm	Potencia Luminaria	12.21 W	Eficacia	84.03 lm/W	Eficiencia	100.00%
Flujo Fuentes de luz	1025.90 lm	Valor Máximo	226.92 cd	Posición	C=0.00 G=0.00	CG	Bisimétrico

34mm x 610mm

Semiplanos C

180.0 ———— 0.0  
270.0 ———— 90.0

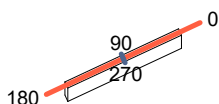


**Luminaria**

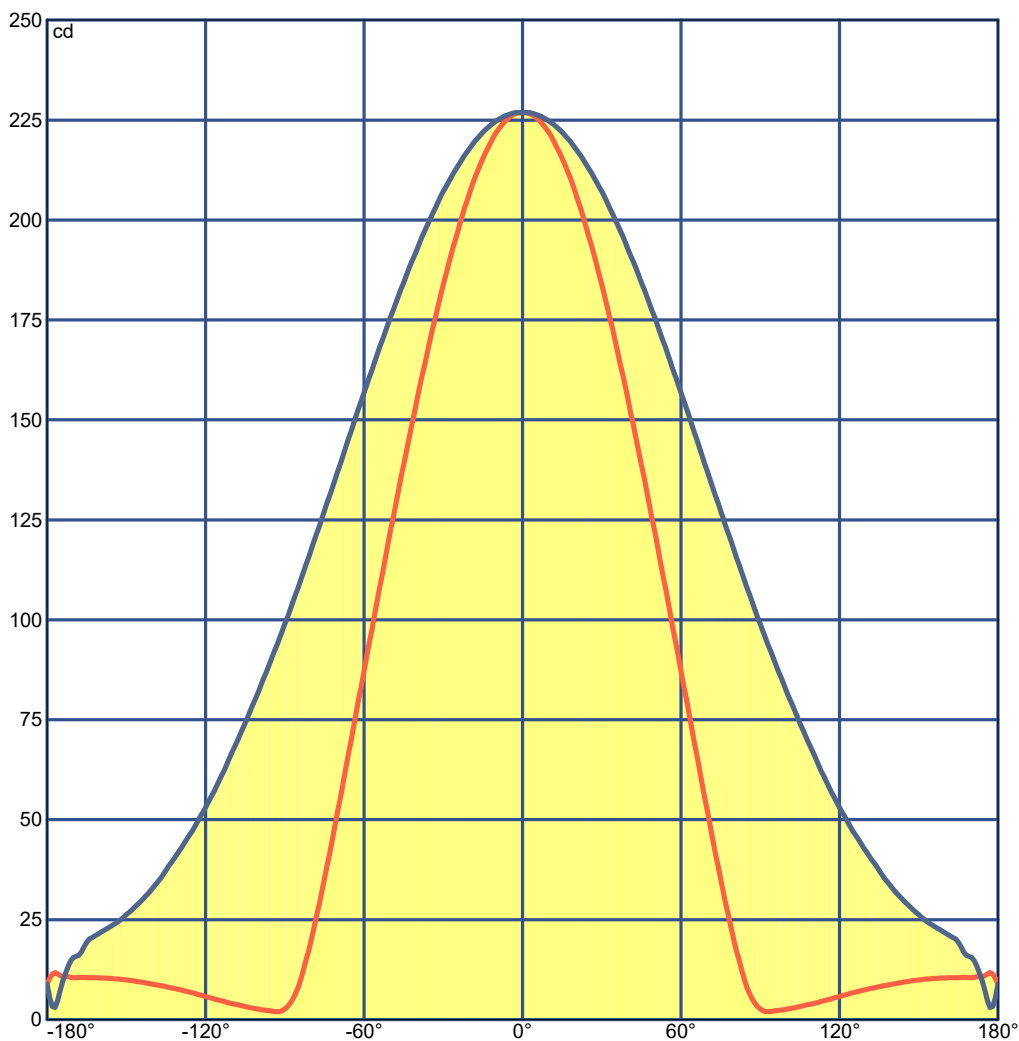
Código A704-015-15-30K  
Nombre AMBROSIA A 60 LEFT MATT GOLD 30K  
Ensayo  
Código CL041A22F001GE2  
Nombre AMBROSIA A 60 LEFT MATT GOLD 30K

Flujo Luminaria	1025.90 lm	Potencia Luminaria	12.21 W	Eficacia	84.03 lm/W	Eficiencia	100.00%
Flujo Fuentes de luz	1025.90 lm	Valor Máximo	226.92 cd	Posición	C=0.00 G=0.00	CG	Bisimétrico

34mm x 610mm



Semiplanos C  
180.0 ——— 0.0  
270.0 ——— 90.0



**Luminaria**

Código A704-015-15-30K

Nombre AMBROSIA A 60 LEFT MATT GOLD 30K

**Ensayo**

Código CL041A22F001GE2

Nombre AMBROSIA A 60 LEFT MATT GOLD 30K

Flujo Luminaria	1025.90 lm	Potencia Luminaria	12.21 W	Eficacia	84.03 lm/W	Eficiencia	100.00%
Flujo Fuentes de luz	1025.90 lm	Valor Máximo	226.92 cd	Posición	C=0.00 G=0.00	CG	Bisimétrico

**UGR**  
S = 0.250

Reflectancias										
Techo/Cavidad	0.7	0.7	0.5	0.5	0.3	0.7	0.7	0.5	0.5	0.3
Paredes	0.5	0.3	0.5	0.3	0.3	0.5	0.3	0.5	0.3	0.3
PDT	0.2	0.2	0.2	0.2	0.2	0.2	0.2	0.2	0.2	0.2
Dimensiones del Local						Vista Lateral				
x=2H y=2H	17.0	18.2	17.6	18.8	19.4	17.9	19.1	18.4	19.6	20.3
x=2H y=3H	18.4	19.5	19.0	20.0	20.7	19.9	21.0	20.5	21.6	22.3
x=2H y=4H	18.9	19.9	19.5	20.5	21.2	21.0	22.0	21.6	22.6	23.3
x=2H y=6H	19.2	20.2	19.9	20.8	21.5	22.0	22.9	22.6	23.5	24.3
x=2H y=8H	19.3	20.2	20.0	20.9	21.6	22.5	23.4	23.1	24.0	24.8
x=2H y=12H	19.4	20.3	20.0	20.9	21.6	22.9	23.8	23.6	24.5	25.2
x=4H y=2H	17.8	18.8	18.4	19.4	20.1	18.4	19.4	19.0	20.0	20.7
x=4H y=3H	19.3	20.2	20.0	20.9	21.6	20.7	21.6	21.4	22.2	23.0
x=4H y=4H	20.0	20.8	20.7	21.5	22.2	21.9	22.7	22.6	23.4	24.2
x=4H y=6H	20.5	21.2	21.2	21.9	22.7	23.1	23.8	23.8	24.5	25.3
x=4H y=8H	20.6	21.3	21.4	22.0	22.8	23.7	24.4	24.4	25.1	25.9
x=4H y=12H	20.7	21.3	21.5	22.0	22.9	24.3	24.9	25.0	25.6	26.4
x=8H y=4H	20.6	21.2	21.3	21.9	22.8	22.2	22.9	22.9	23.6	24.4
x=8H y=6H	21.3	21.9	22.1	22.6	23.5	23.7	24.2	24.4	24.9	25.8
x=8H y=8H	21.6	22.1	22.4	22.9	23.7	24.4	24.9	25.2	25.6	26.5
x=8H y=12H	21.9	22.3	22.6	23.0	23.9	25.2	25.6	25.9	26.3	27.2
x=12H y=4H	21.9	22.5	22.6	23.2	24.0	22.5	23.1	23.2	23.8	24.6
x=12H y=6H	22.5	23.0	23.2	23.7	24.6	23.9	24.4	24.6	25.1	26.0
x=12H y=8H	22.8	23.2	23.6	24.0	24.9	24.7	25.1	25.4	25.9	26.8

**Luminaria**

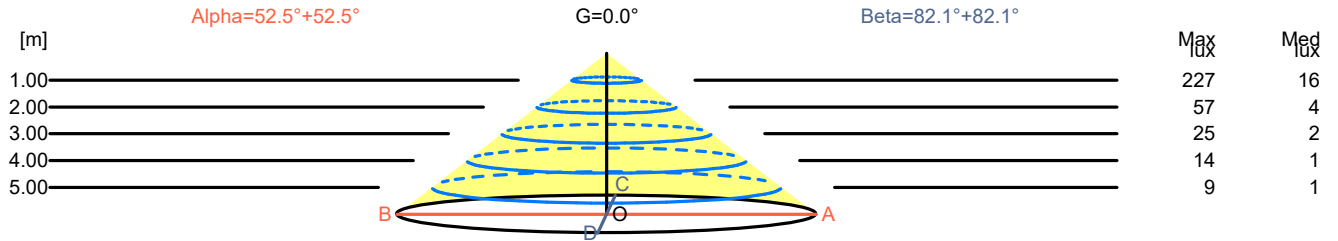
Código A704-015-15-30K  
 Nombre AMBROSIA A 60 LEFT MATT GOLD 30K  
 Ensayo  
 Código CL041A22F001GE2  
 Nombre AMBROSIA A 60 LEFT MATT GOLD 30K

Flujo Luminaria	1025.90 lm	Potencia Luminaria	12.21 W	Eficacia	84.03 lm/W	Eficiencia	100.00%
Flujo Fuentes de luz	1025.90 lm	Valor Máximo	226.92 cd	Posición	C=0.00 G=0.00	CG Bisimétrico	

Apertura a 50.00 % de Max Intensidad

H[m]	1.00	2.00	3.00	4.00	5.00	H[m]	1.00	2.00	3.00	4.00	5.00
OA	1.30	2.61	3.91	5.21	6.52	OC	7.21	14.42	21.62	28.83	36.04
OB	1.30	2.61	3.91	5.21	6.52	OD	7.21	14.42	21.62	28.83	36.04

	Intensidades Luminosas [ cd ]									
	0	5	15	25	35	45	55	65	75	85
OA	226.92	225.67	215.39	196.08	169.93	138.84	104.75	69.54	35.13	7.98
OB	226.92	225.67	215.39	196.08	169.93	138.84	104.75	69.54	35.13	7.98
OC	226.92	226.40	221.90	212.94	200.16	184.39	166.38	146.94	127.21	108.02
OD	226.92	226.40	221.90	212.94	200.16	184.39	166.38	146.94	127.21	108.02



H[m]	D[m]	Max lux	Med lux	Alpha=52.5°+52.5°		G=0.0
1.00	2.61	227	16			
2.00	5.21	57	4			
3.00	7.82	25	2			
4.00	10.42	14	1			
5.00	13.03	9	1			

H[m]	D[m]	Max lux	Med lux	Beta=82.1°+82.1°		G=0.0
1.00	14.42	227	16			
2.00	28.83	57	4			
3.00	43.25	25	2			
4.00	57.66	14	1			
5.00	72.08	9	1			

**Luminaria**

Código A704-015-15-30K  
 Nombre AMBROSIA A 60 LEFT MATT GOLD 30K  
 Ensayo  
 Código CL041A22F001GE2  
 Nombre AMBROSIA A 60 LEFT MATT GOLD 30K

Flujo Luminaria	1025.90 lm	Potencia Luminaria	12.21 W	Eficacia	84.03 lm/W	Eficiencia	100.00%
Flujo Fuentes de luz	1025.90 lm	Valor Máximo	226.92 cd	Posición	C=0.00 G=0.00	CG	Bisimétrico

Flujo Total=1025.90 Flujo Luminaria=1025.90

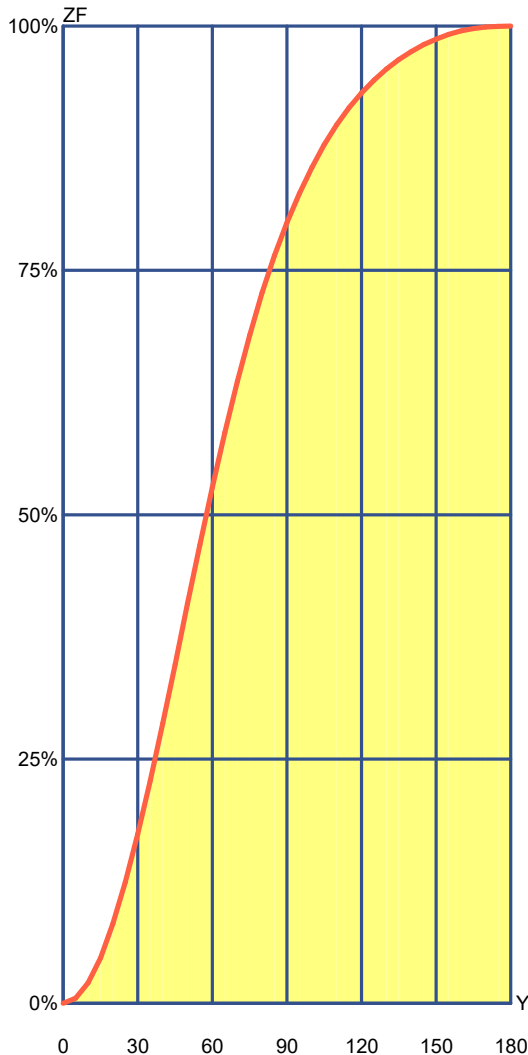
RI	0.60	0.80	1.00	1.25	1.50	2.00	2.50	3.00	4.00	5.00	10.00	20.00
DRR	0.25	0.32	0.38	0.45	0.50	0.58	0.64	0.69	0.74	0.78	0.87	0.93
RC	7	7	7	7	7	7	7	7	7	7	7	7

Flujo Zonal por 1000 Lúmenes

Y°	10	20	30	40	50	60	70	80	90	100	110	120	130	140	150	160	170	180
ZF(Y)	21	81	173	286	408	528	636	727	799	855	899	932	956	974	987	995	999	1000

Códigos de Flujo C.I.E.  
 38 66 86 80 100

C.I.E.	7	LOR	100.00000 %
D DIN 5040	B21	ULOR	20.11468 %
F UTE	0.80 H + 0.20 T	DLOR	79.88532 %
B NBN	BZ 6	UFF	20.11468 %
RN	20.11468 %	DFF	79.88532 %
BLF	1.0	FFR	25.17944 %



Flujo Zonal				
Gamma °	Flujo	Suma lm	Flujo [%]	Suma [%]
0°	0.00	0.00	0.00%	0.00 %
5°	5.28	5.28	0.53 %	0.53 %
10°	15.66	20.94	1.57 %	2.09 %
15°	25.55	46.49	2.56 %	4.65 %
20°	34.63	81.12	3.46 %	8.11 %
25°	42.63	123.75	4.26 %	12.38 %
30°	49.35	173.10	4.93 %	17.31 %
35°	54.65	227.75	5.46 %	22.78 %
40°	58.44	286.19	5.84 %	28.62 %
45°	60.68	346.87	6.07 %	34.69 %
50°	61.46	408.33	6.15 %	40.83 %
55°	60.82	469.15	6.08 %	46.92 %
60°	58.93	528.09	5.89 %	52.81 %
65°	55.97	584.06	5.60 %	58.41 %
70°	52.14	636.19	5.21 %	63.62 %
75°	47.68	683.87	4.77 %	68.39 %
80°	42.94	726.81	4.29 %	72.68 %
85°	38.21	765.02	3.82 %	76.50 %
90°	33.84	798.85	3.38 %	79.89 %
95°	29.98	828.83	3.00 %	82.88 %
100°	26.50	855.33	2.65 %	85.53 %
105°	23.29	878.62	2.33 %	87.86 %
110°	20.31	898.94	2.03 %	89.89 %
115°	17.59	916.53	1.76 %	91.65 %
120°	15.16	931.69	1.52 %	93.17 %
125°	13.09	944.78	1.31 %	94.48 %
130°	11.28	956.06	1.13 %	95.61 %
135°	9.66	965.72	0.97 %	96.57 %
140°	8.22	973.94	0.82 %	97.39 %
145°	6.94	980.89	0.69 %	98.09 %
150°	5.80	986.69	0.58 %	98.67 %
155°	4.71	991.40	0.47 %	99.14 %
160°	3.60	995.00	0.36 %	99.50 %
165°	2.51	997.51	0.25 %	99.75 %
170°	1.53	999.04	0.15 %	99.90 %
175°	0.75	999.79	0.07 %	99.98 %
180°	0.21	1000.00	0.02 %	100.00 %

**Luminaria**

Código A704-015-15-30K  
Nombre AMBROSIA A 60 LEFT MATT GOLD 30K  
Ensayo  
Código CL041A22F001GE2  
Nombre AMBROSIA A 60 LEFT MATT GOLD 30K

Flujo Luminaria	1025.90 lm	Potencia Luminaria	12.21 W	Eficacia	84.03 lm/W	Eficiencia	100.00%
Flujo Fuentes de luz	1025.90 lm	Valor Máximo	226.92 cd	Posición	C=0.00 G=0.00	CG	Bisimétrico

Isolux (Suelo)

Posición Luminaria X=0.00m Y=0.00m Z=2.50m

