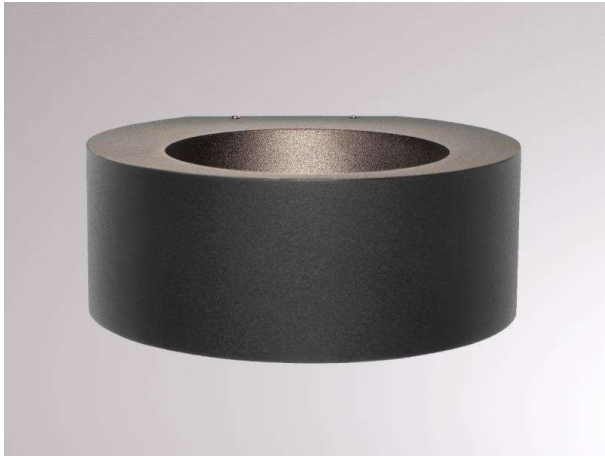


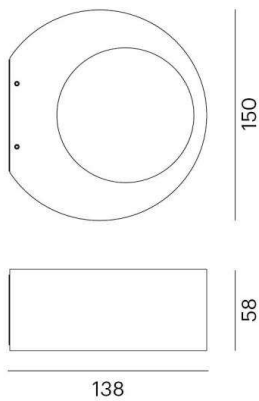
EYO W

472-90039900

EYO W SURFACE MOUNTED WALL LUMINAIRE made of aluminium, anthrazite, similar to RAL 7016, light output indirect, IP54



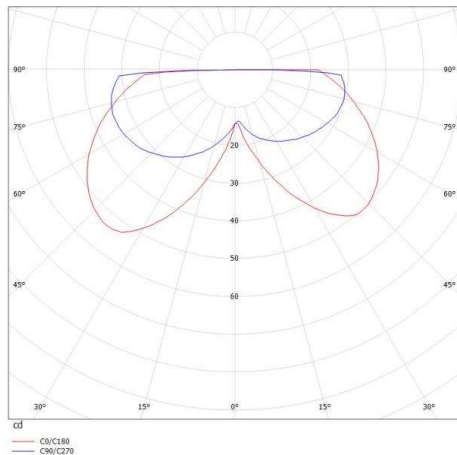
DRAWING



TECHNICAL DETAILS

| | |
|---------------------|------------------|
| System perform. [W] | 7 |
| Bulb type | LED |
| Luminous flux [lm] | 200 |
| Colour temp. [K] | 3000K |
| CRI | >90 |
| Light output | indirect |
| Voltage [V] | 220-240V 50/60Hz |
| Material | aluminium |
| Length [mm] | 150 |
| Width [mm] | 138 |
| Height [mm] | 58 |
| IP protection class | IP54 |
| Voltage class | protection cl. I |
| Net weight [kg] | 1,27 |
| Color lamp | anthrazite |
| RAL | 7016 |
| EAN-Number | 9010506091953 |
| Lifetime [h] | 25 000 |

LIGHT DISTRIBUTION CURVE



The values are rated values. Power and luminous flux are initially subject to a tolerance of +/- 10%. Colour temperature tolerance: +/- 150 K. The values apply to an ambient temperature of 25°C unless otherwise specified.