

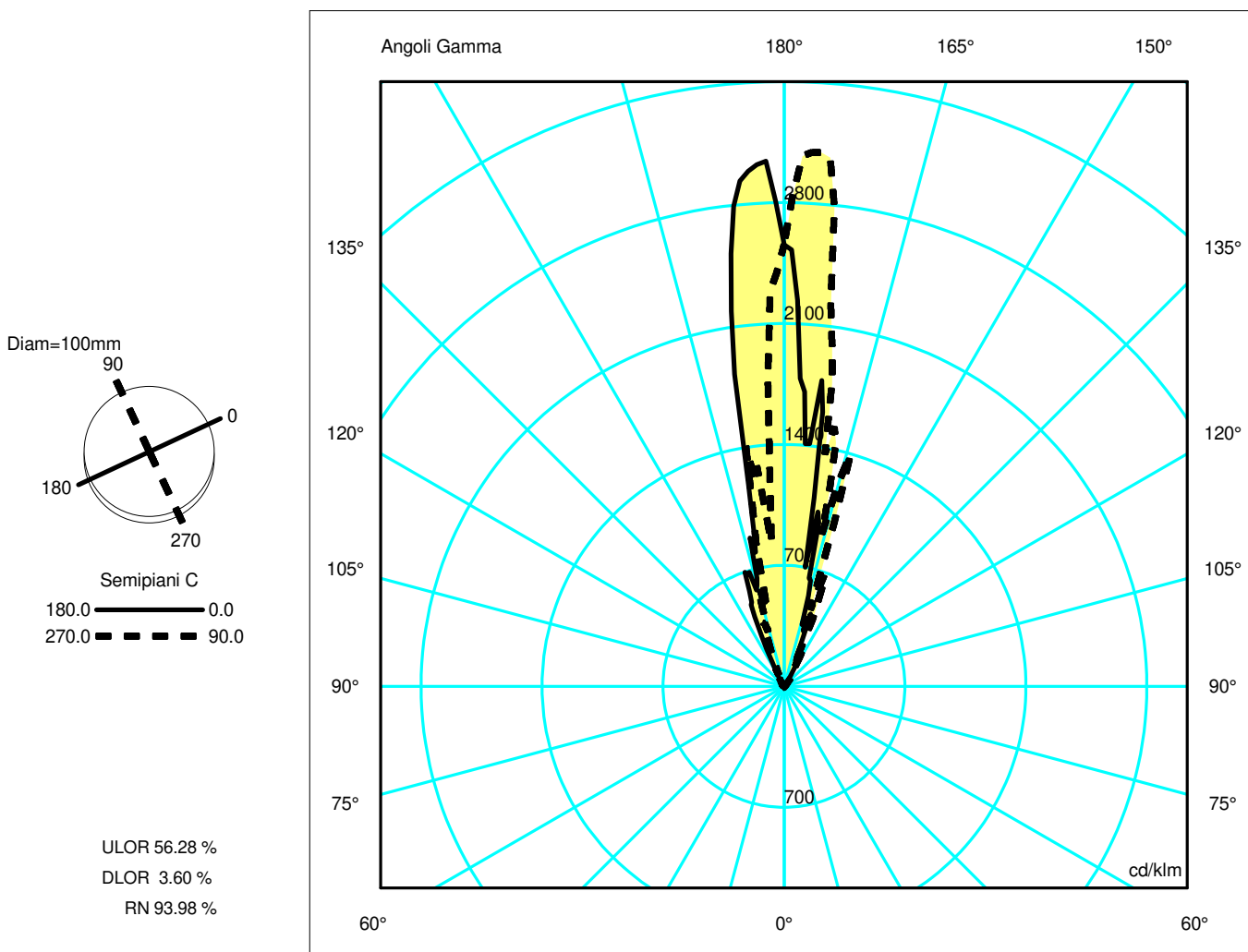
Luminaire

Code DOI4600C03
Name DECOMPOSE' LIGHT TABLE - ORANGE

Measurment.

Code FTS1602075
Name DECOMPOSE' LIGHT TABLE - ORANGE

Luminaire Flux	209.59 lm	Luminaire Power	5.00 W	Efficacy	41.92 lm/W	Efficiency	59.88%
Lamps Flux	350.00 lm	Maximum value	3121.43 cd/klm	Position	C=135.00 G=178.00	CG	Asymmetrical
Round Luminaire Round Luminous Area		Diam. Diam.	100 mm 100 mm	Height Height	600 mm 0 mm		
Horizontal Luminous Area Emitting area on Plane 0° Emitting area on Plane 90°		0.007854 m2 0.000000 m2 0.000000 m2		Emitting area on Plane 180° Emitting area on Plane 270° Glare area at 76°		0.000000 m2 0.000000 m2 0.001900 m2	
Coordinate system Date Measurement Distance		CG 26-09-2016 0.00		Symmetry Type Maximum Gamma Angle Measurement Flux		Asymmetrical 180 350.00 lm	
LED PAR 20 51-36° 5W E27							
C.I.E. F UTE	24 52 77 6 60 0.04 J + 0.56 T			D DIN 5040 B NBN	-- BZ 8		



Luminaire

Code DOI4600C03
Name DECOMPOSE' LIGHT TABLE - ORANGE

Measurment.

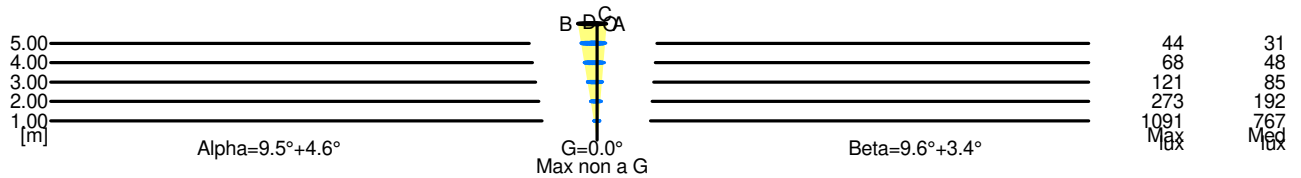
Code FTS1602075
Name DECOMPOSE' LIGHT TABLE - ORANGE

Luminaire Flux	209.59 lm	Luminaire Power	5.00 W	Efficacy	41.92 lm/W	Efficiency	59.88%
Lamps Flux	350.00 lm	Maximum value	3121.43 cd/klm	Position	C=135.00 G=178.00	CG	Asymmetrical
Round Luminaire		Diam.	100 mm	Height	600 mm		
Round Luminous Area		Diam.	100 mm	Height	0 mm		
Horizontal Luminous Area		0.007854 m2		Emitting area on Plane 180°		0.000000 m2	
Emitting area on Plane 0°		0.000000 m2		Emitting area on Plane 270°		0.000000 m2	
Emitting area on Plane 90°		0.000000 m2		Glare area at 76°		0.001900 m2	
Coordinate system		CG		Symmetry Type		Asymmetrical	
Date		26-09-2016		Maximum Gamma Angle		180	
Measurement Distance		0.00		Measurement Flux		350.00 lm	
LED PAR 20 51-36° 5W E27							
C.I.E.	24 52 77 6 60			D DIN 5040	--		
F UTE	0.04 J + 0.56 T			B NBN	BZ 8		

Width at 50.00 % of Max Intensity

H[m]	1.00	2.00	3.00	4.00	5.00	H[m]	1.00	2.00	3.00	4.00	5.00
OA	0.08	0.16	0.24	0.32	0.40	OC	0.17	0.34	0.51	0.68	0.85
OB	0.17	0.33	0.50	0.67	0.83	OD	0.06	0.12	0.18	0.24	0.30

	Luminous Intensities [cd/klm]										
	0	5	15	25	35	45	55	65	75	85	
OA	894.78	493.58	190.27	69.79	8.31	6.28	5.25	4.41	3.07	2.18	
OB	894.78	1028.34	212.72	84.32	15.72	12.51	8.21	6.39	5.21	2.78	
OC	894.78	1075.74	427.57	59.40	28.44	9.10	7.13	4.23	2.41	1.88	
OD	894.78	292.37	206.03	40.07	6.07	4.67	4.49	3.90	2.52	1.91	



5.00	1.24	44	31		
4.00	0.99	68	48		
3.00	0.74	121	85		
2.00	0.50	273	192		
1.00	0.25	1091	767		
H[m]	D[m]	Max lux	Med lux	Alpha=9.5°+4.6°	Max non a G G=0.0°

5.00	1.15	44	31		
4.00	0.92	68	48		
3.00	0.69	121	85		
2.00	0.46	273	192		
1.00	0.23	1091	767		
H[m]	D[m]	Max lux	Med lux	Beta=3.4°+9.6°	Max non a G G=0.0°