

WL390



Terminal max.:
~240V / 10A
0,75 - 2,5 mm²

Model	Voltage	Wattage	CCT	W / Ø (mm)	H (mm)
WL390	220-240V	38/29 W	3000K / 4000K	390	63

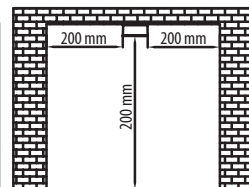
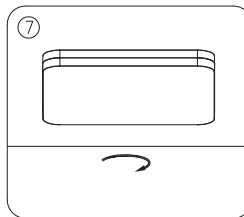
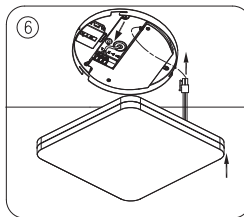
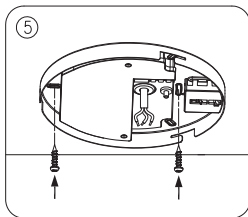
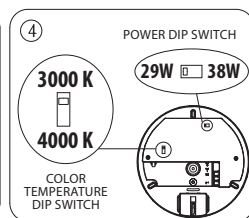
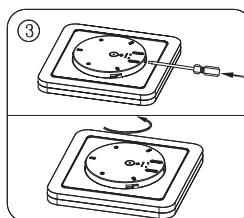
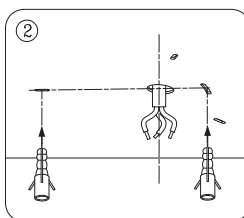
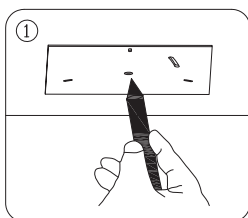


IEC/EN60598-1
EN61547

IEC/EN60598-2-1
EN61000-3-1

EN62471:2008
EN61000-3-2

EN55015



Montageanleitung

- Folgen Sie dieser Montageanleitung um die korrekte Installation der Leuchte sicherzustellen.
- Bewahren Sie die Anleitung für zukünftige Fragen auf. Alle Arbeiten an dem Produkt sind im spannungsfreien Zustand durchzuführen.
- Der elektrische Anschluss ist nur von einer qualifizierten Elektrofachkraft durchzuführen.

Installation instruction

- Always follow this instruction to ensure correct and safe installation and functioning of the luminaire and keep it for future reference.
- Always isolate the power before commencing installation.
- If in doubt, consult a qualified electrician. Ensure that you always install the luminaire to the relevant regulations.