

**11. Montageskizze / Assembly drawing / Schéma de montage / Montageset / Szkic montażu /
 Monteringstegning**
9616056

 3W LED
 230 V ~ 50 Hz

Bestimmungsgemäße Verwendung

Applications / Utilisation conforme / Beoogd gebruik / Użycie zgodnie z przeznaczeniem / Tiltentk/tiltænkt anvendelse

(D) Ortsfeste Verwendung als Einbauleuchte im Außenbereich
(GB) Recessed light, provided for stationary outdoor use
(F) Installation fixe en tant que Spot encastré, à l'extérieur

(NL) Vast gebruik als Inbouwspot buitenshuis
(PL) Do montażu stacjonarnego jako reflektor wpuszczana do wnętrza
(N/DK) Til stasjonært/stationær bruk/brug som downlight utendørs/udendørs

Verwendete Symbole

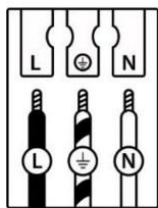
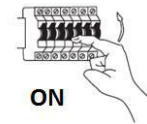
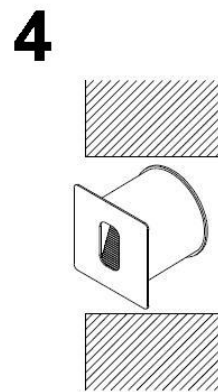
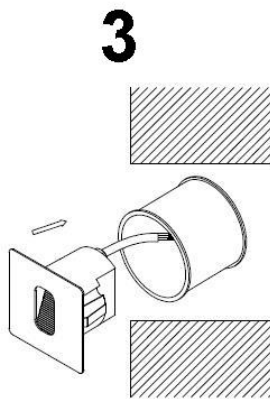
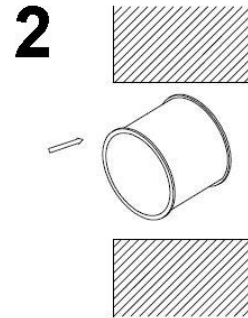
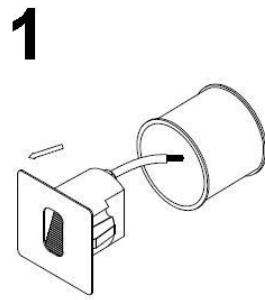
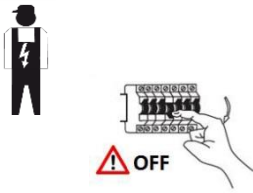
Safety Precautions / Symboles utilises / Gebruikte symbolen / Stosowane symbole / Anvendte symboler


IP 65


Lieferumfang

Package contents / Contenu de la livraison / Bij de levering inbegrepen / Zakres dostawy / Leveringsomfang

| | | |
|---|--|--|
| <ul style="list-style-type: none"> • 1 Einbauleuchte • Montagematerial • Montageanleitung | <ul style="list-style-type: none"> • 1 Recessed spotlight • Installation hardware • Mounting instructions | <ul style="list-style-type: none"> • 1 Spot encastré • Matériel de montage • Instructions de montage |
| <ul style="list-style-type: none"> • 1 Inbouwspot • Monteringsmateriale • Montagehandleiding | <ul style="list-style-type: none"> • 1 Reflektor wpuszczany • Elementy montażowe • Instrukcja montażu | <ul style="list-style-type: none"> • 1 Downlight • Monteringsmateriale • Brukerveiledning/ Brugervejledning |



| | (D) Deutsch | (GB) English | (F) Français | (NL) Nederlands | (PL) Polski | (N) Norsk / (DK) Dansk |
|---|--------------------------|----------------------|--|----------------------------|------------------------|-------------------------------|
| L | Stromführender Leiter | Live conductor | Conducteur | Spanningvoere nde draad | Przewód prądowy | Strømførende leder |
|  | Schutzleiter | Earth conductor | Conducteur de protection (terre) | Aardkabel | Przewód uziemiający | Jordledningen |
| N | Neutralleiter | Neutral conductor | Conducteur neutre | Nulleider | Przewód zerowy | Nøytralleder/ Neutralleder |