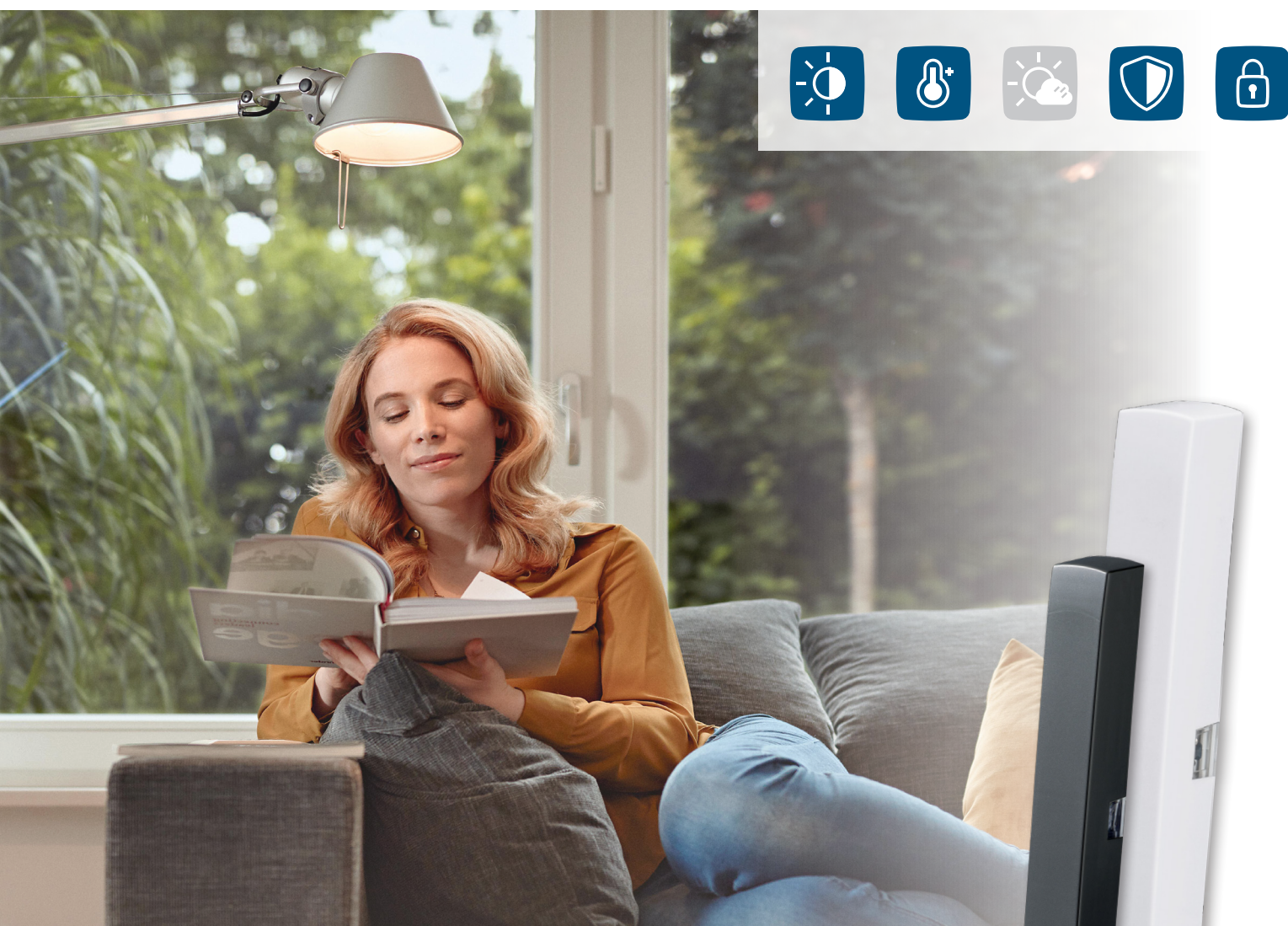


**SAVES ENERGY,  
INCREASES YOUR  
SECURITY**

# Window and Door Contact – optical

HmIP-SWDO-2 | HmIP-SWDO-A

The compact sensor immediately detects opening or closing of windows and doors via an integrated infra-red light barrier. Reliable monitoring of windows secures the home while saving valuable energy during ventilation, as the room temperature is reduced automatically.

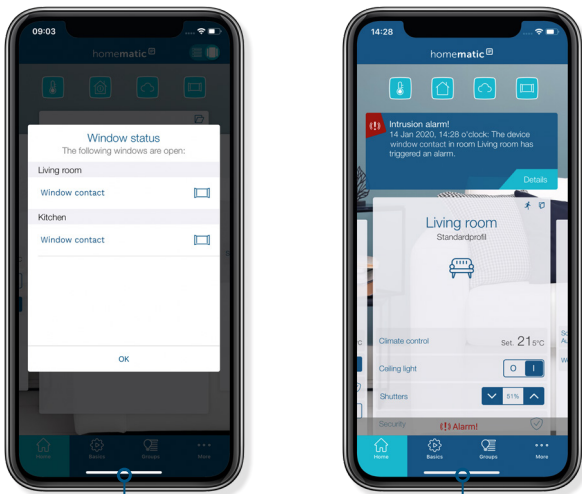


Available in white and anthracite

**homematic**   
Smart Living, Simply Exciting.

## SMART MONITORING FOR A SECURE HOME

Opening and closing of windows and doors is detected immediately and displayed via the Homematic IP app. In addition, your home becomes even more secure with a Homematic IP Alarm Siren (e.g. HmIP-ASIR-2). If a window or door is opened, a loud alarm sound will be triggered automatically.



Shows open windows or doors and alarm messages in the Homematic IP App

To enable operation, the device has to be connected with one of the following solutions:

- Homematic IP Access Point with free smartphone app and free cloud service
- Third-party solutions of partners

## TECHNICAL SPECIFICATIONS

Supply voltage	1x 1.5 V LR03/micro/AAA
Current consumption	100 mA max.
Battery life	2 years (typ.)
Degree of protection	IP20
Ambient temperature	5 to 35 °C
Dimensions (W x H x D)	102 x 15 x 20 mm
Weight	30 g (incl. batteries)
Radio frequency	868.0-868.6 MHz 869.4-869.65 MHz
Typical open area RF range	300 m

## FRESH AIR BUT NO WASTE OF ENERGY

In connection with the Homematic IP Radiator Thermostat, the temperature in the room is automatically reduced if windows are opened for ventilation. The lowering temperature can even be defined by the user. The individual comfort temperature is automatically set as soon as the window is closed.

## EVERYTHING IN SIGHT

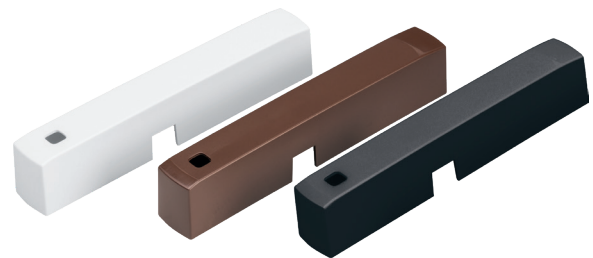
The Homematic IP app gives a current overview of windows and doors in the smart home, providing for a secure feeling when you leave home or while being on the move.

## ADAPTS TO THE WINDOW FRAME

The supplied white and brown caps allow the contact to be visually adapted to the window or door.

## FAST AND EASY INSTALLATION

The mounting material included in the scope of delivery allows the contact to be fixed either with screws or adhesive strips. Thanks to residue-free removal of the adhesive strip, the window contact is even suitable for rented property.



Colour variants in white, brown and anthracite

## LOGISTICAL DATA

Version	White	Anthracite
Product reference	157857A0	160027A0
EAN code	4047976578573	4047976600274
Short description	HmIP-SWDO-2	HmIP-SWDO-A
Packing unit	144	144
Packing dimensions	122 x 93 x 36 mm	122 x 93 x 36 mm
Weight incl. packaging	116,7 g	116,7 g

## PACKAGE CONTENTS

Homematic IP Window / Door Contact – optical  
 Caps: White (incl. brown) | Anthracite  
 Double-sided adhesive strips  
 Countersunk head screws 2.2 x 13 mm (2x)  
 Reflecting sticker (for dark surfaces)  
 1.5 V LR03/micro/AAA battery  
 User manual