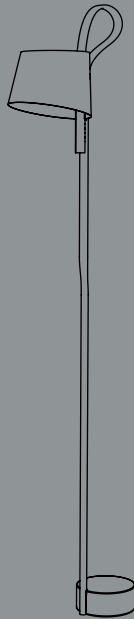


- INSTRUCTION MANUAL -

# ROPE TRICK



DESIGN BY STEFAN DIEZ

# HAY



## - GENERAL INFORMATION -

### TECHNICAL DATA

This product is supplied with an integrated LED light source. The expected lifespan of the LED light source is 25,000 hours, which equates to 8-10 years of general use. When the light source reaches its end of life, the whole luminaire should be replaced.

FITTING TYPE | Integrated LED

POWER (W) | 10W

COLOUR TEMPERATURE | 3000K warm white

### ATTENTION

Ensure that the power supply to the circuit has clearly been turned OFF before installing the product. In some countries, electrical installation must be carried out by authorised electricians/contractors; please check with your local authority for guidance.

The product must not be modified in any way. HAY accepts no responsibility for any products that have been modified or tampered with. The external flexible cable or cord of this luminaire cannot be replaced. If the cord is damaged, the luminaire should be replaced. This lamp is designed for indoor use only.

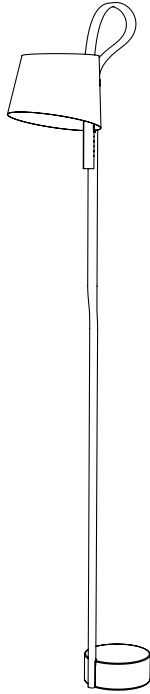
### CARE AND MAINTENANCE

The shade and the base can be cleaned with a soft damp cloth and mild detergent, or a dry microfibre cloth. Do not use alcohol or any other solvents to clean the product and avoid using abrasive or rough sponges. Ensure that the power supply has been turned OFF before cleaning the product.

Do not use wet or damp cloths for cleaning and maintaining the lam  body. Please use a dry, lint-free cloth or duster to remove any dirt.

Do not place feet on the base of the light when moving the position of the head as this could damage the lamp.

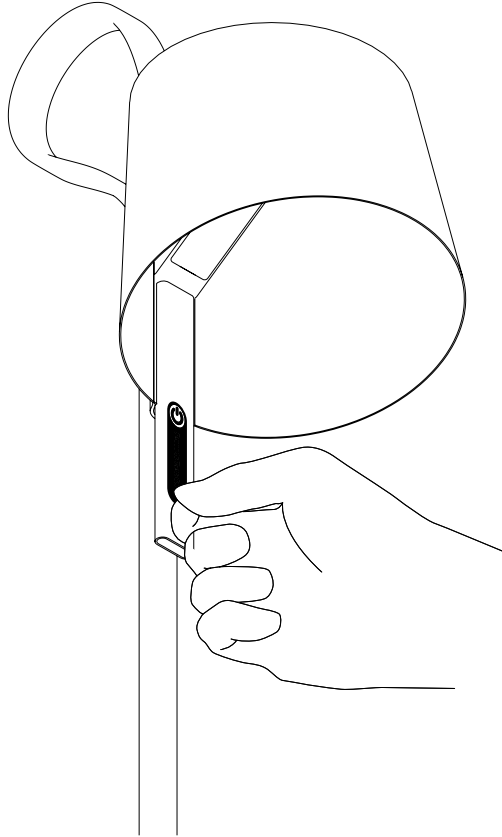
- PARTS -



Lamp

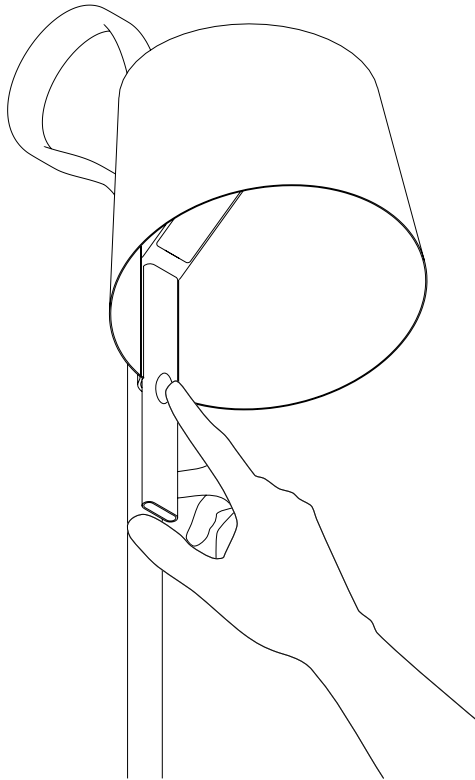
1.

Unpack all the parts and check that you have received all the parts listed. Remove the peelable sticker that highlights the location of the dimmer push button. The button is located where the shade meets the handle, highlighted by a brightly coloured dot underneath the surface of the rope material.



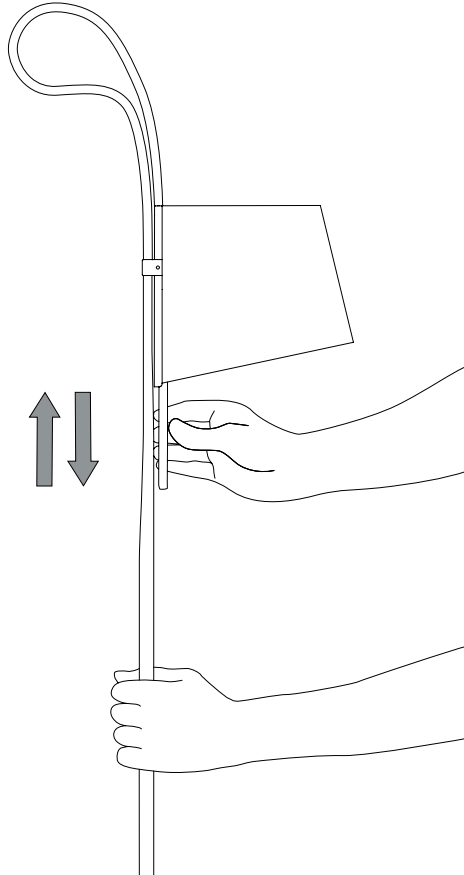
2.

Press the button to switch the light on and off. Press and hold to gradually change the intensity of the light.



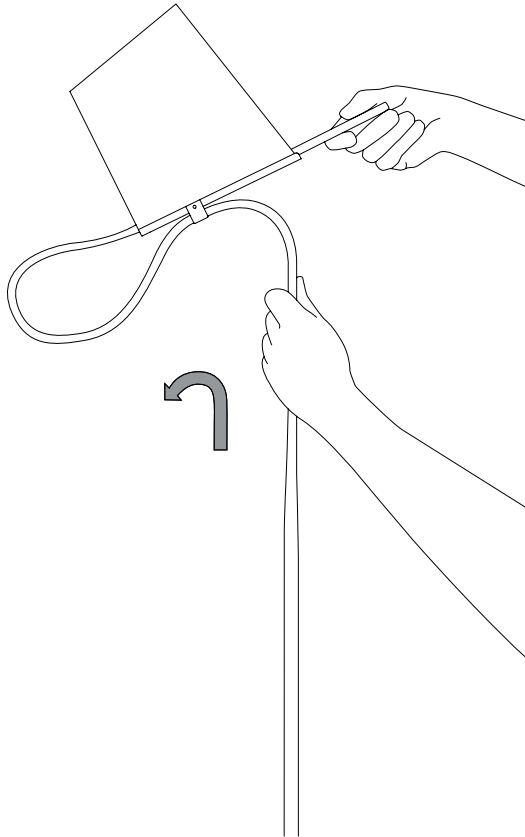
3.

Using one hand to hold the upright and the other on the handle, adjust the height and angle of the head by sliding it around the loop.



4.

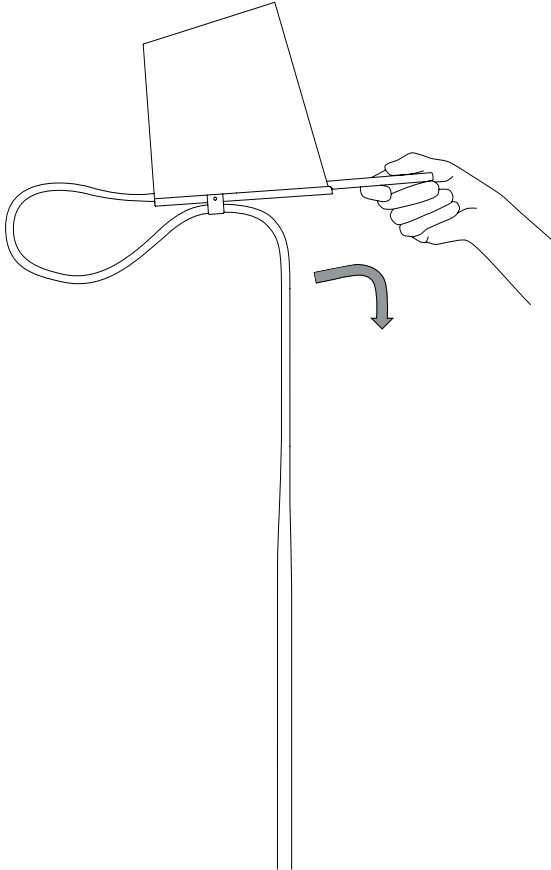
When positioning the head beyond the bend in the rope, hold the upright close to the bend and push the handle gently.





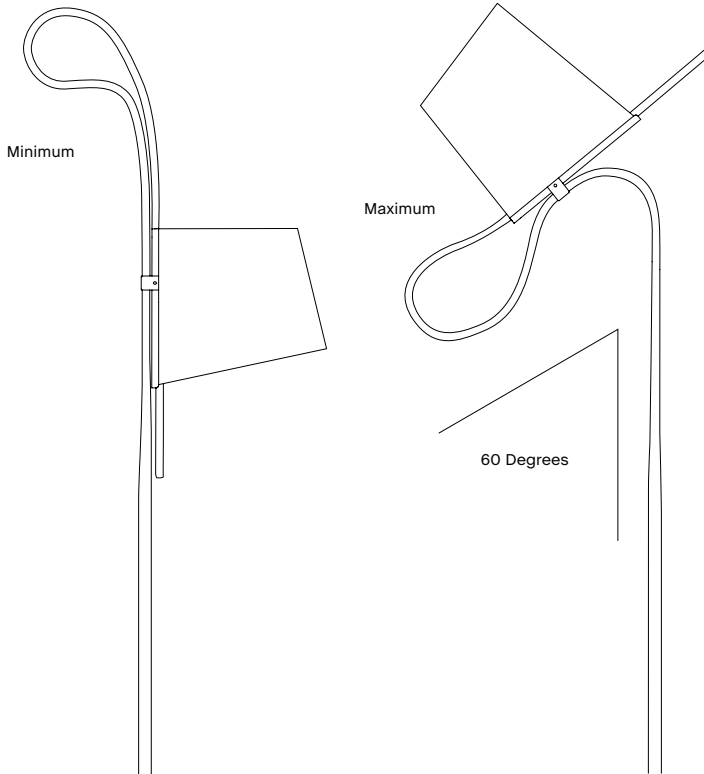
5.

To re-adjust from the up-light position, pull gently on the handle so that the head slides back down the rope.



6.

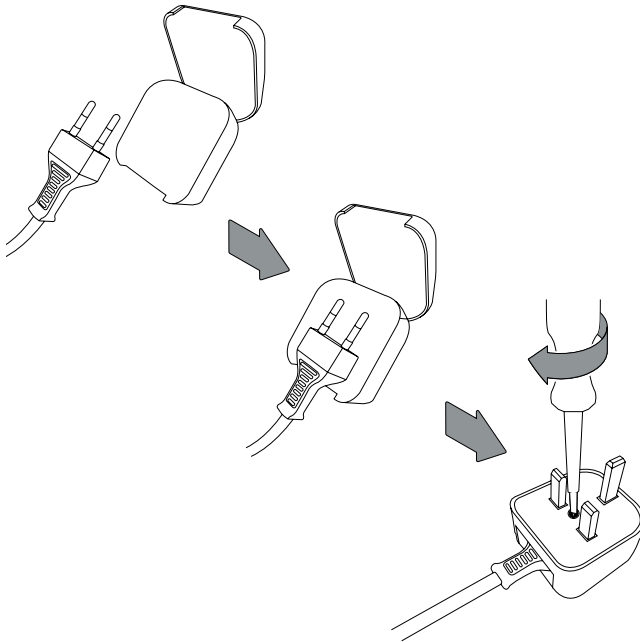
We recommend that you do not extend the head past the minimum and maximum positions shown below (roughly 60 degrees from vertical when sliding back around the loop).



- UK CUSTOMERS ONLY -

For UK customers, a plug converter will be supplied. If not included, please contact the HAY retailer from where the lamp was purchased.

Insert the EU plug into the converter provided. Close the converter over the EU plug with the pins secured in the internal spring clip contacts. Screw the converter together to ensure the UK plug is secure.



- CARE & MAINTENANCE -

Our Care & Maintenance offers guidance for optimal maintenance of your HAY product. It includes advice and instructions on cleaning and caring for specific materials to prolong the life of your lighting.



Please find our Care & Maintenance guide by scanning the QR code



You can find more relevant information on Rope Trick by scanning the QR code

You can also find the same information here  
[hay.dk/downloads](https://hay.dk/downloads)







Havnen 1 8700 Horsens Denmark  
+45 4282 0282 / hay@hay.com

[www.hay.com](http://www.hay.com)

11/01/2022

**HAY**