



Paulmann

### Safety Instructions

14, 17, 18



Info

[www.paulmann.com](http://www.paulmann.com)

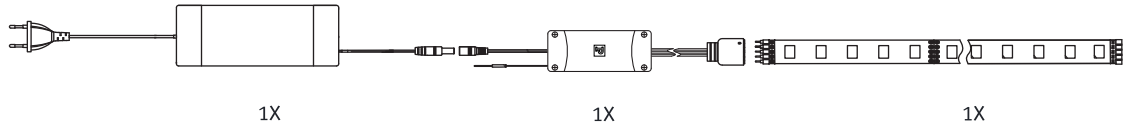
Paulmann Licht GmbH  
Quezinger Feld 2  
31832 Springe  
Germany

[www.paulmann.com](http://www.paulmann.com)

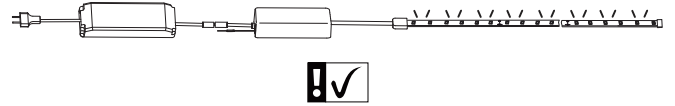
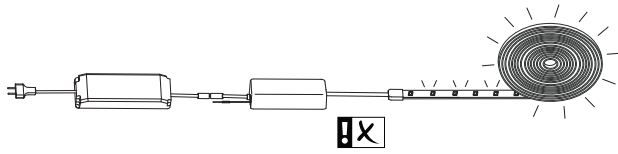
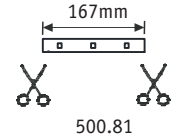
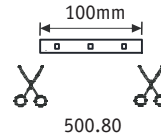
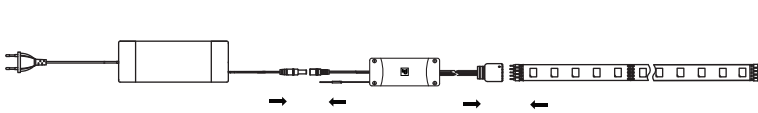
Art.-Nr.: 500.80  
500.81



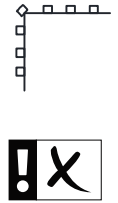
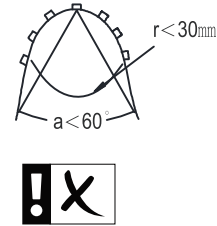
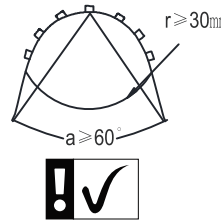
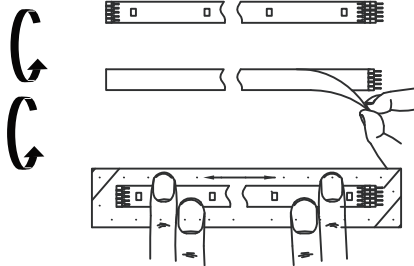
(+MA 326)PPN 03/18



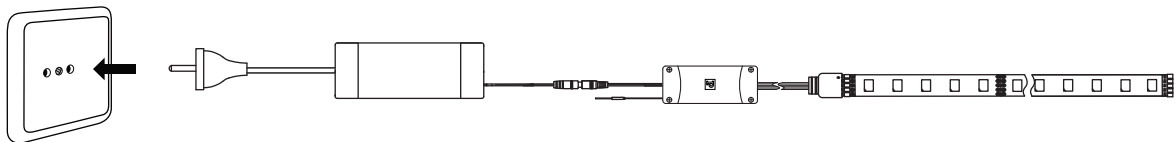
A



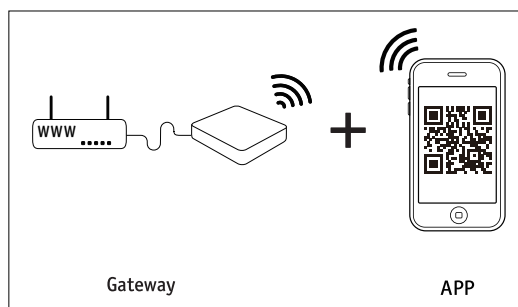
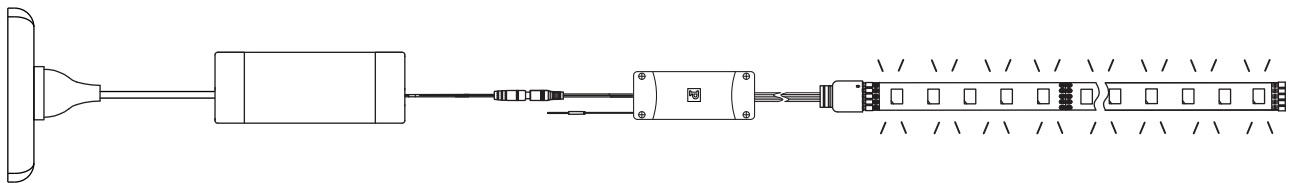
B



C



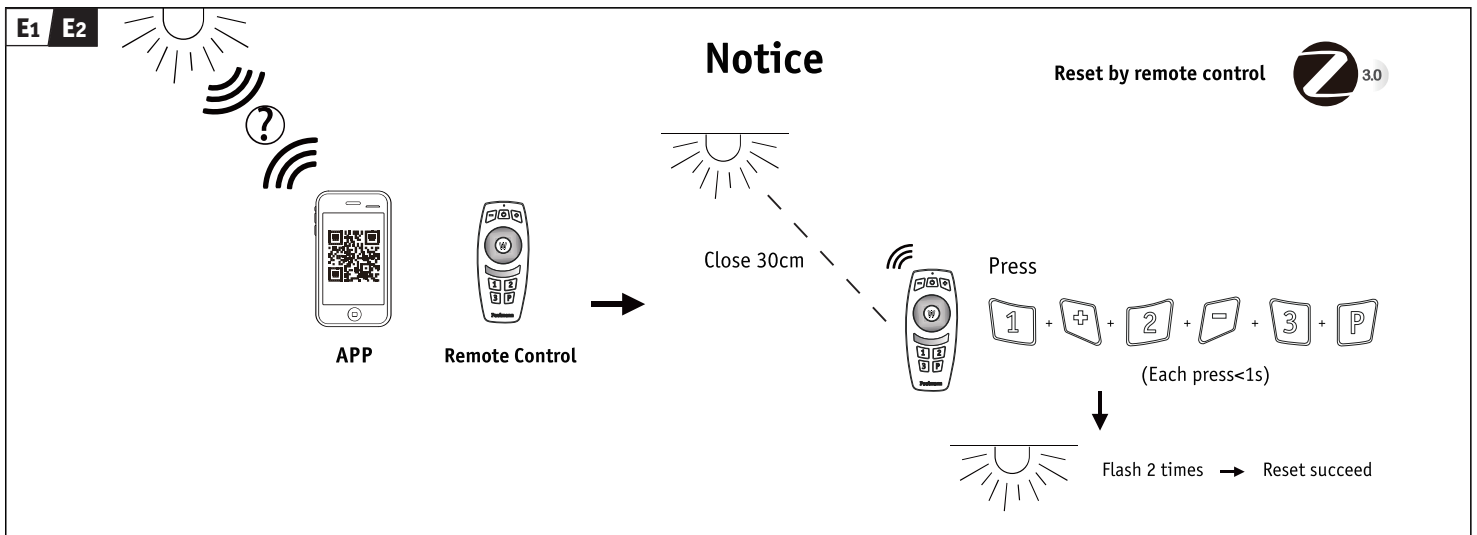
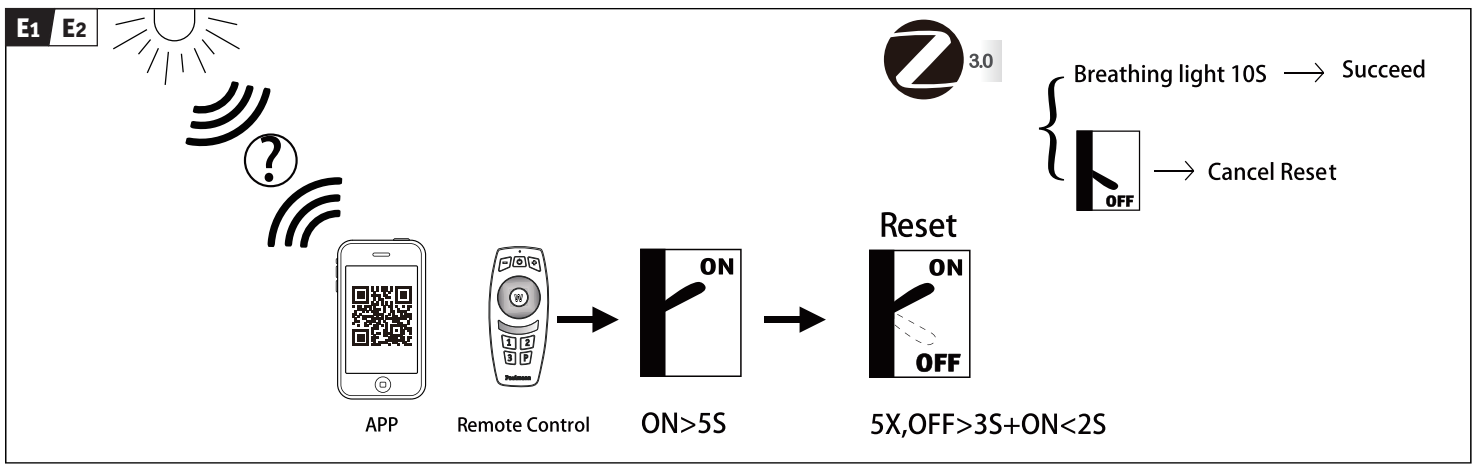
D



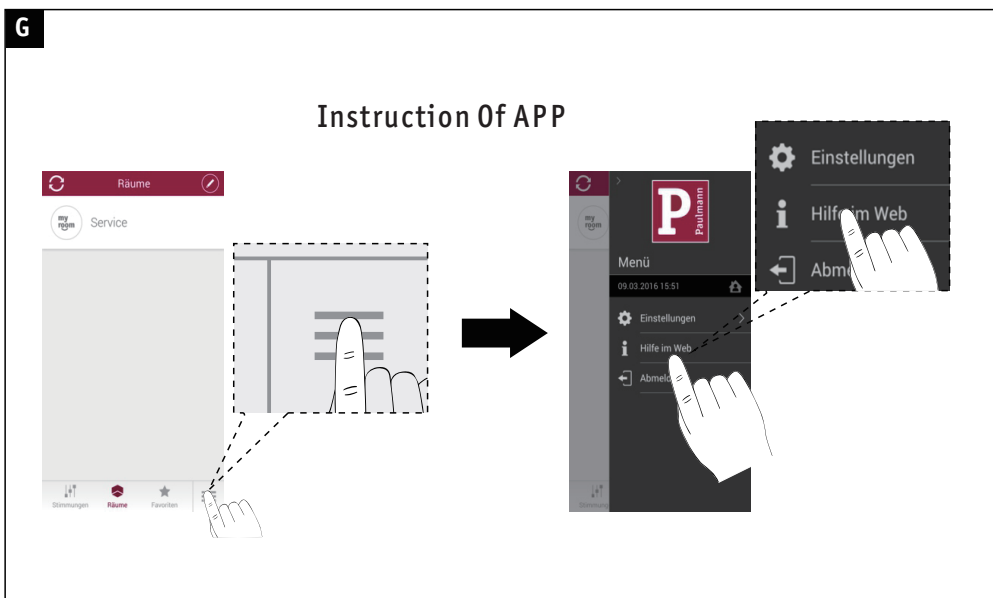
or



Remote Control



<p><b>F</b></p> <p><b>FREE App</b></p> <p>Download App for extended functions <a href="https://www.paulmann.com/zb">https://www.paulmann.com/zb</a></p>	<p><b>Not incl. Smart Device</b></p> <p>.ipad .iphone 4s Higher .Android 4.4 Higher</p>	<p><b>Not incl. Gateway</b></p> <p>Paulmann Art.-Nr:500.66 Art.-Nr:500.88</p>	<p><b>Not incl. Remote Control</b></p> <p>Paulmann Art.-Nr.500.67</p>
---	---	---	---



Zugelassen für den Betrieb in allen Ländern der EU / Approved for operating in all European countries

CE: Konform mit / in accordance with / conformement a 2014/30/EU, 2014/53/EU  
<http://www.paulmann.com/de/de/b2b-haendler-log-in.html>

2.4 GHz - 2,4835 GHz

NO

doesn't apply for the geographical area within a radius of 20km from the centre on "Ny Alesund"

Hiermit erklärt Paulmann Licht, dass der Funkanlagentyp Art.-Nr.: 500.80 500.81 der Richtlinie 2014/53/EU entspricht. Der vollständige Text der EU-Konformitätserklärung ist unter der folgenden Internetadresse verfügbar: [www.paulmann.com/ce](http://www.paulmann.com/ce)

Funk-Frequenz :2.4GHz-2.4835GHz  
Abgestrahlte Energie :10mW