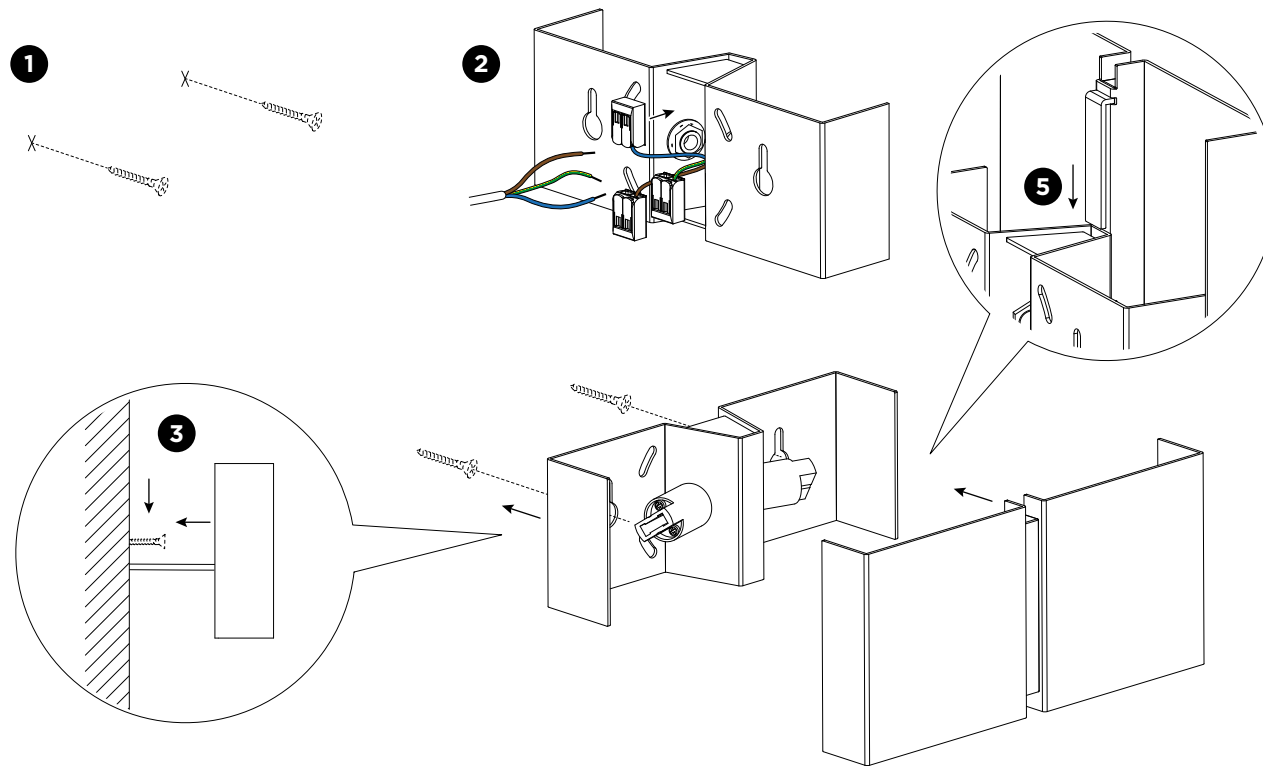
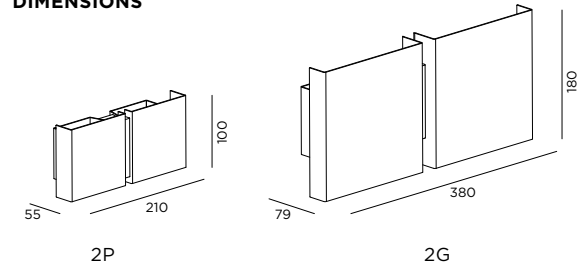


CHRISTOPHE GEVERS WALL

INSTALLATION INSTRUCTIONS | SEPTEMBER 2025



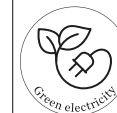
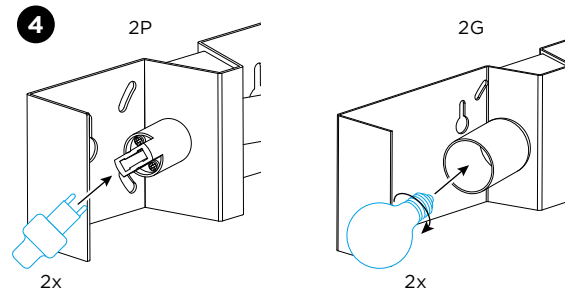
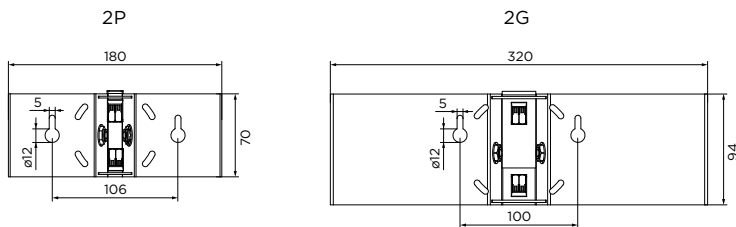
DIMENSIONS



MOUNTING INSTRUCTION

- 1** Mount screws to the wall according to the dimensions (screws are not included).
- 2 POWER CONNECTION**
Connect to 220-240V.
- 3** Mount the fixture on the wall by placing it on the screws and pushing it down.
- 4** Mount the lamps to the fixture (lamps are not included).
- 5** Place the cover on the fixture by sliding the cover on the base from the upper direction.

Mounting base:



Use green electricity to light up your luminaire.