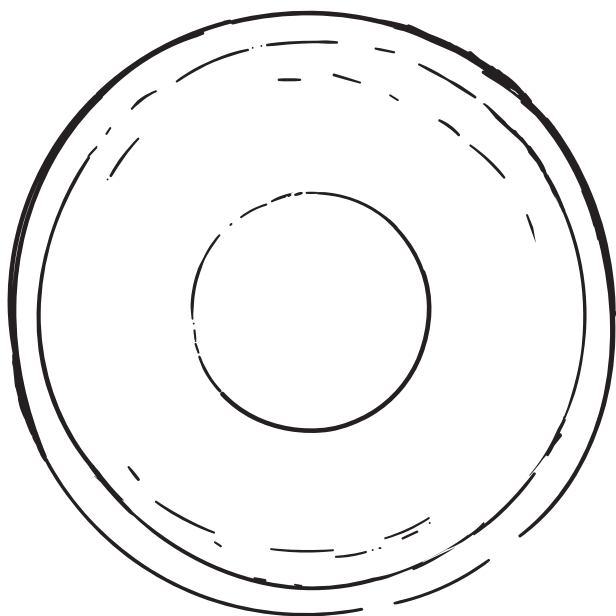


We recommend reading the installation-guide before mounting.

ENDLESS

THE MANUAL



Congratulations on your new Endless wall lamp. We hope you will enjoy using this product.
Please follow these instructions to ensure correct operation.

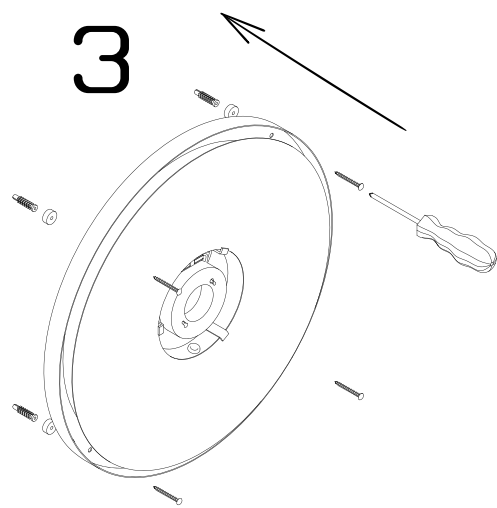
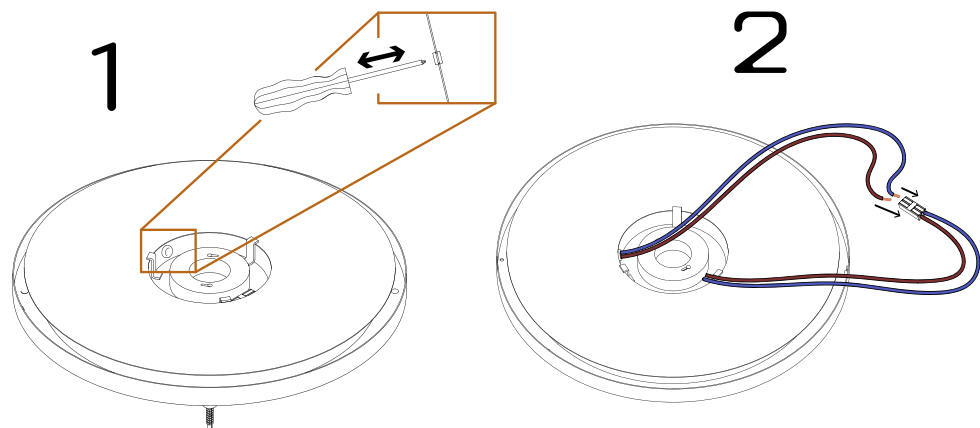
DESIGN (BY) US

ENDLESS

Please read these instructions carefully and keep them for reference. For your own safety, please study each step of this instruction manual before first use of the product. Design By Us is not responsible for any faults or damages caused by not following these instructions correctly.

Prepared for hardwiring:
Cord with switch not included - Can be bought separately, 22301, Black cord with switch

Bulb: Not included
Suggested bulb: 50029, Disc bulb GX53 7W 2700k
Socket: GX53 Max 15W LED
Color temp: 2700K
Input: 240V~ 50/60Hz
IP rating: IP54



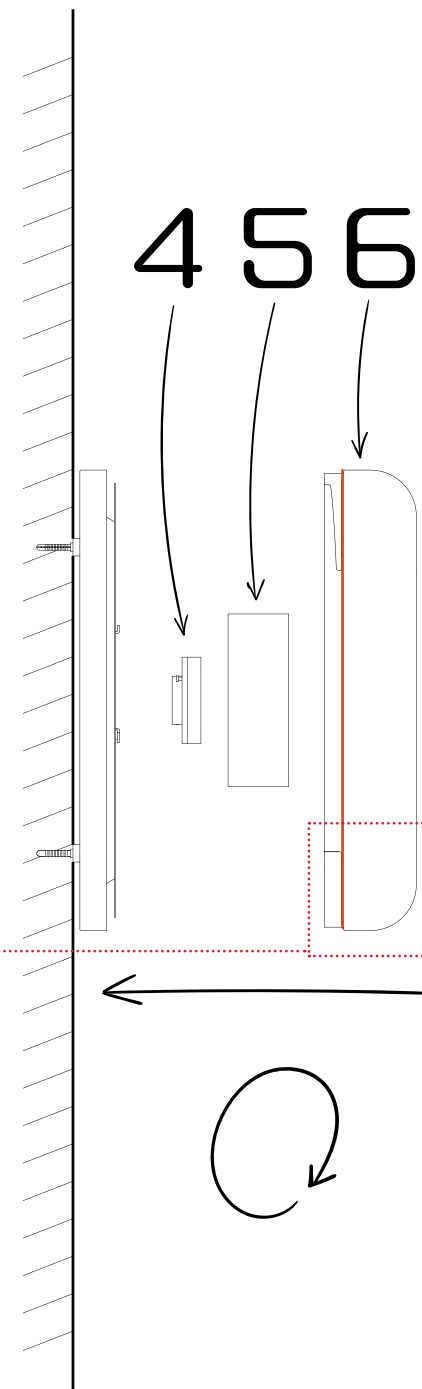
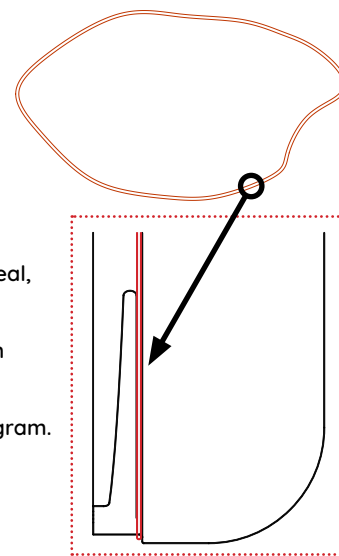
- 1 Use a slim screwdriver to poke a hole through the silicone grommet located in the center compartment of the base.
- 2 After pulling the power cord through the grommet attach the wiring to the pin connector.
- 3 Carefully mount the metal base on the wall. We recommend using a slim screwdriver for this as the screwholes are very close to the mirror edge. It is important that the screws are all the way in and installed straight. When not hardwiring the lamp use the four included spacers to make room for the powercord. NB: The mirror is sharp so be careful not to cut yourself.

4 When the base is correctly mounted on the wall you are ready to insert the GX53 bulb and test if it turns on.

5 Then you can install the acrylic diffuser by placing it over the three metal pins in the center compartment and turning clockwise.

6 Lastly you should mount the outer glass. The shade should have its silicon ring installed as this helps give the lamp a tight seal. When inserting the glass into the base you should make sure that the dimples in the base are inbetween the aluminium rails on the glass. Then rotate clockwise until fastened. Handle the outer glass carefully as the outer mirror coating is very easily scratched.

6 For a waterproof seal, ensure the silicone gasket is correctly positioned between the groove and the fastening rail as depicted in the diagram.



#WE ARE
DESIGNERS

WWW.DESIGN(BY)US.COM

Rentemestervej 43 · 2400 Copenhagen NV · Denmark
mail@design-by-us.com · +45 3811 8086 · www.design-by-us.com · VAT DK-28100809