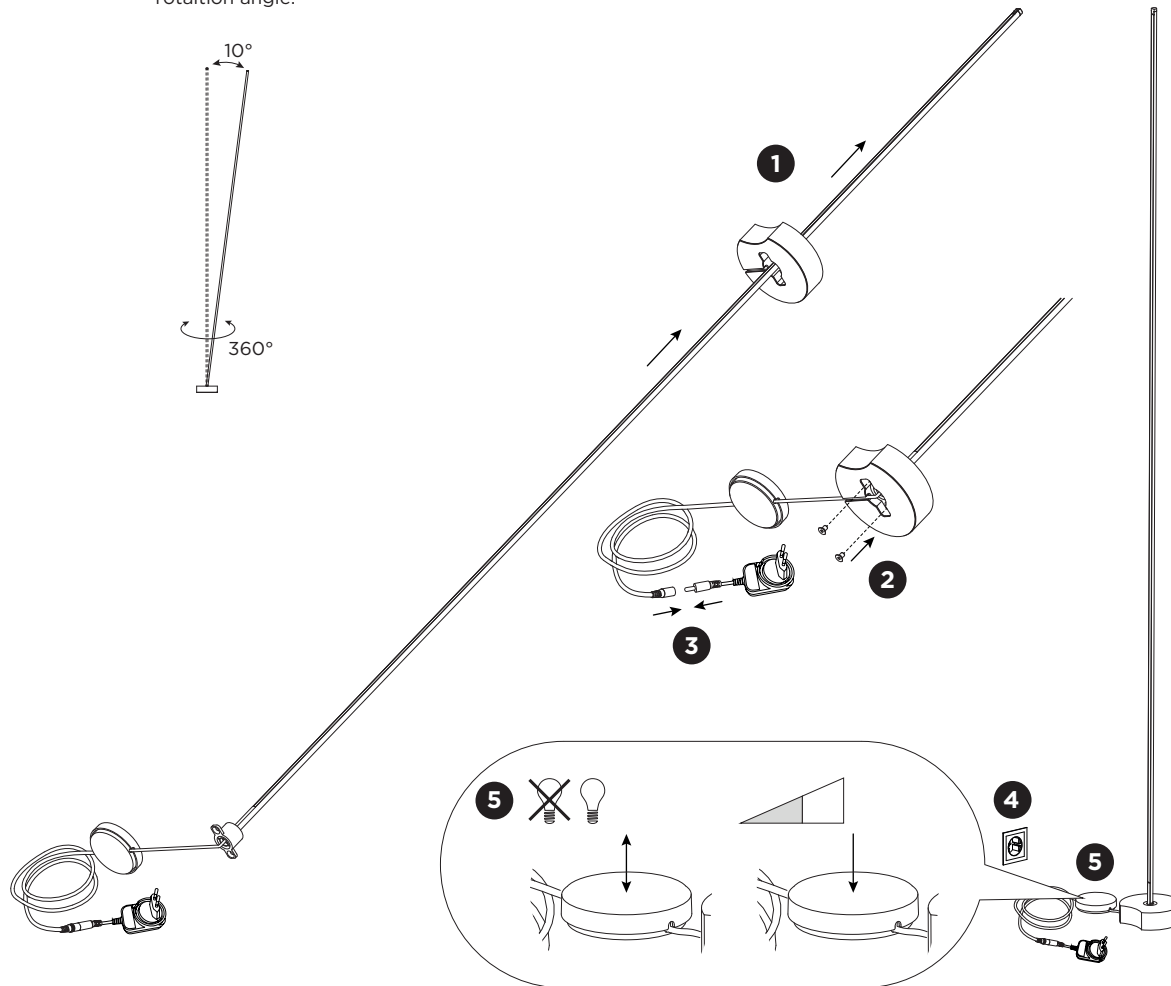
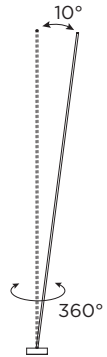


FINLIN FLOOR

INSTALLATION INSTRUCTIONS | JULY 2025

rotation angle:

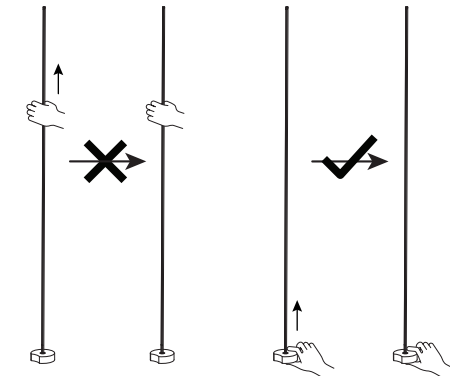


DIMENSIONS



MOUNTING INSTRUCTION

- 1** Pass the fixture through the base.
- 2** Fix it with two screws from the bottom (screws are included).
- 3** Connect the cable with the plug.
- 4** Connect the power cable to the socket.
- 5** Push the button to turn the light on/off.
Hold the button to dim the light.



WEVER & DUCRÉ
LIGHTING

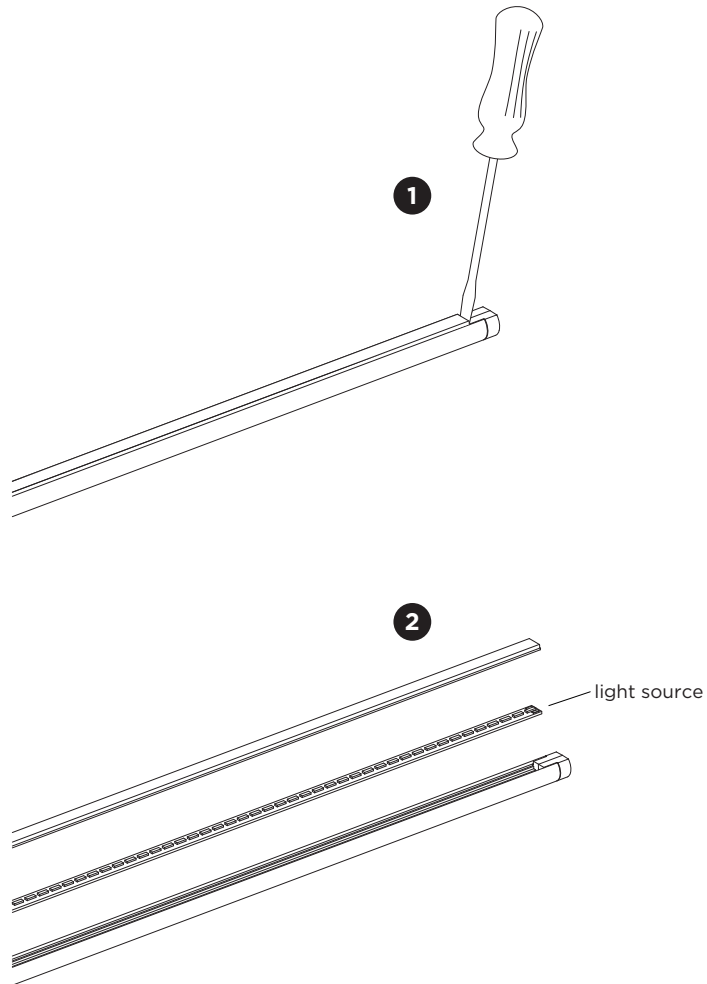
WEVER & DUCRÉ BV

Spinnerijstraat 99/21, 8500 Kortrijk, Belgium
weverducre.com

PB19-010-929-00_v1

FINLIN FLOOR

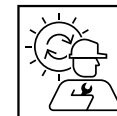
INSTALLATION INSTRUCTIONS | JULY 2025



DISMOUNTING AND RECYCLING INSTRUCTIONS

Light source

- 1 Pull out the cover with a flat screw driver.
- 2 Disconnect the wires to remove the light source.



The light source is replaceable by Wever & Ducré or by a professional with explicit authorisation. For more information please contact your local Wever & Ducré customer service point.



This luminaire contains a light source with the energy class E.



Use green electricity to light up your luminaire.