

# J.J.W.

10-09-2015

## 02

QA60 max. 53W | E27 | 220-240VAC | 50-60Hz

CE IP20 960°C 0,9m

silver / grey  
gold

2055E8S0  
2055E8G0

### OPTIONAL

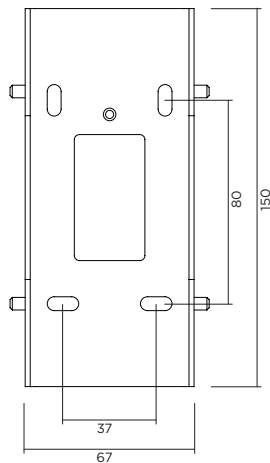
QA60 LED E27 6W 2200K 400lm

9003E109

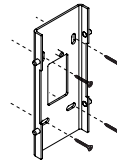
QA60 LED E27 6W 2700K 650lm

9003E108

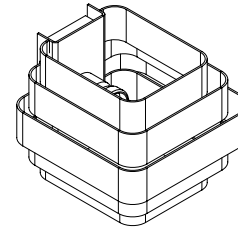
back plate dimensions



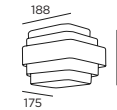
①



③



## DIMENSIONS



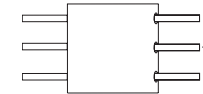
## MOUNTING INSTRUCTION

- ① Remove the back plate and mount it on the wall with screws.

## POWER CONNECTION

- ② Connect the power supply.

Interior: STANDARD version



- ③ Mount the fixture to the back plate
- ④ Insert the lamp (lamp is not included)



WEVER & DUCRÉ  
LIGHTING

[www.weverducre.com](http://www.weverducre.com)

# INSTALLATION INSTRUCTIONS