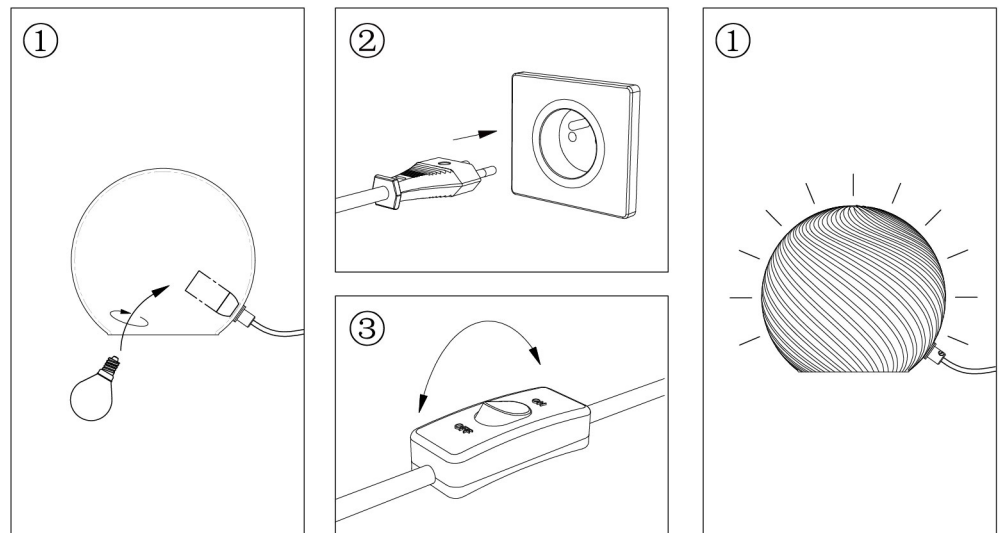
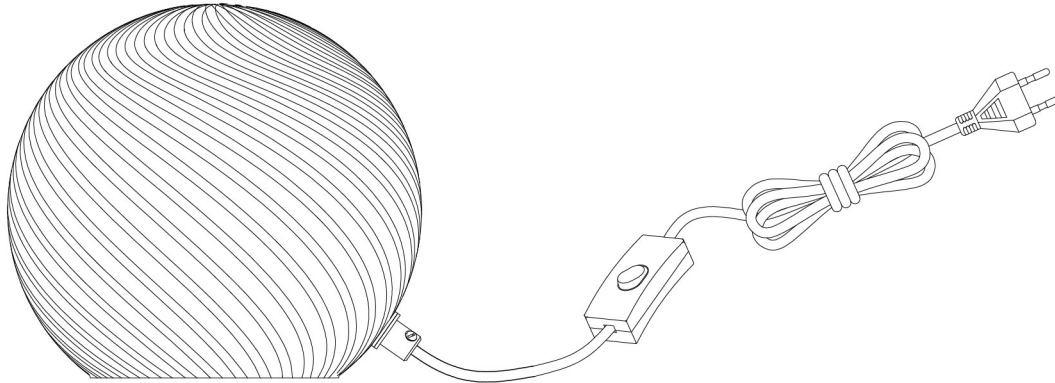


INSTRUCTION MANUAL

Model: **Candy bord** Ø 20 cm

**halo
design**

COPENHAGEN



230V .E14.MAX 25W



INSTRUCTION MANUAL

- 1 Follow the instruction sketch
Følg instruktionen på tegningen**
- 2 Make sure power is OFF on the outlet, before beginning the installation
Sikr dig at strømmen er slukket, inden du påbegynder installationen**
- 3 Insert the light bulb
Isæt lyskilden**
- 4 Go through point 1 to 2 before connecting the lamp to the power
Gennemgå punkt 1 og 2, inden du tilslutter lampen til strømudtaget**