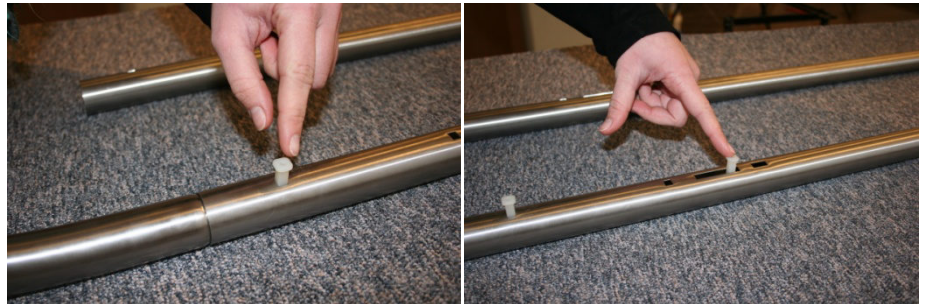
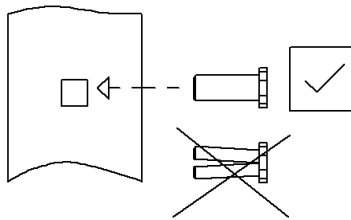


Stand mounting:

1. Drill the letter box through ( $\varnothing$  5mm) at the pre-punched points in the side panels and deburr the drilled holes.
2. Slide the round pipe over the straight stand elements, so that the square holes are one above the other.



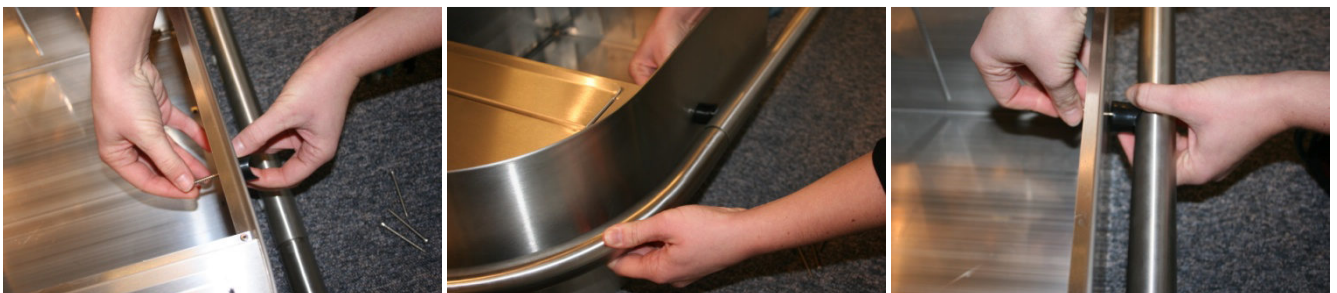
3. Insert the dowel into the holes as indicated in the figures.



4. Place the stand on its reverse side (ideally on a supporting layer, e.g. old carpet or cardboard). Place the box with its rear side onto the stand.



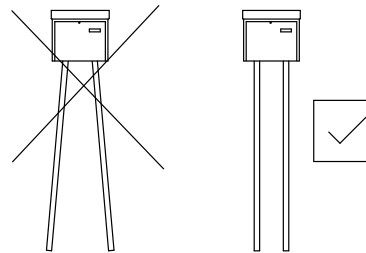
5. Open the door (if necessary, an assisting person can secure it against closing). Insert the screws through the holes from inside and use the black half-round spacers to screw them onto the stand (without tightening them completely). Always begin with the holes positioned nearer to the box top panel.



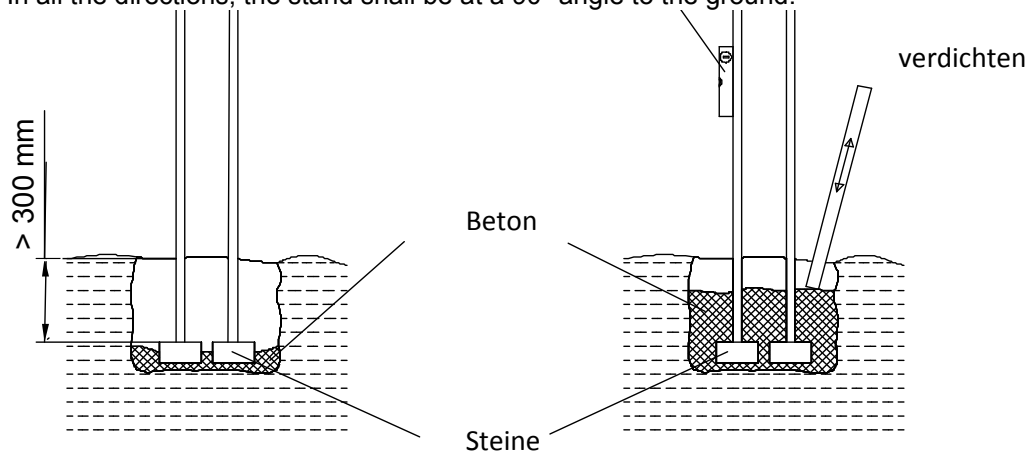
6. Proceed with tightening the screws while aligning the stand. The stand should run in parallel to the front edge of the letter box.



7. The letter box is now ready to be embedded into concrete. While embedding it, the following needs to be observed:
- a. The stand pipes shall run in parallel to each other.



- b. In all the directions, the stand shall be at a 90° angle to the ground.



- c. The door gap shall be evenly spread, the stand shall not strain the letter box.

