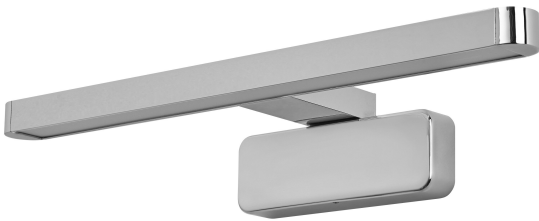


PRODUCT DATASHEET

ORBIS Disc Bar Bathroom Mirror 400mm Chrome Click-CCT IP44

Orbis Disc Bar Bathroom Mirror | Luminaire with two selectable color temperatures via wall switch



Areas of application

- Indoor applications
- Bathrooms (IP44)

Product benefits

- Mirror and wall application
- Can be placed in a wet room (zone 2 and 3)
- The light color can be selected between two color temperatures

Product features

- Type of protection: IP44
- Color temperature selectable via wall switch (3000 K, 4000 K)



TECHNICAL DATA

Electrical data

Nominal wattage	7.00 W
Nominal voltage	220...240 V
Mains frequency	50...60 Hz
Nominal current	46.000 mA
Inrush current time T_{h50}	107 μ s
Max. number of luminaires per miniature circuit breaker B16	206
Power factor λ	≥ 0.5
Protection class	II
Operating mode	Mains voltage

Photometrical data

Luminous flux	380 lm
Luminous efficacy	54 lm/W
Color temperature	3000 ... 4000 K
Light color (designation)	Warm White / Cool White
Color rendering index Ra	≥ 80
Standard deviation of color matching	≤ 6 sdcM
Photobiological safety group acc. to EN62778	RG0
Beam angle	110 °

Dimensions & Weight

Length	400.00 mm
Width	120.00 mm
Height	70.00 mm
Product weight	350.00 g



ORBIS DISC BAR 40CM
CLICKCCT IP44

Materials & Colors

Product color	Chrome
Housing color	Chrome
Body material	Aluminum
Cover material	Polyacrylate (PAK)
Glow Wire Test according to IEC 60695-2-12	650 °C
Mercury content	0.0 mg

Application & Mounting

Ambient temperature range	-20...+40 °C
Temperature range at storage	-20...+80 °C
Type of connection	Screw terminal
Type of protection	IP44
Protection class IK (shock resistance)	IK08
Dimmable	No
Mounting type	Surface
Application environment	Indoor
With light source	Yes
Replaceable light source	No

Lifespan

Lifespan L70/B50 at 25 °C	30000 h ¹⁾
Number of switching cycles	30000

¹⁾ t[h]: L70 / B50 @ 25 °C (Ta), t[h]: L80 / B10 @ 25 °C (Ta), t[h]: L90 / B10 @ 25 °C (Ta)

Certificates & Standards

Luminaire with limited surface temperature, "D sign"	No
Ball shot safe	No
Replaceable light source (EPREL)	Not replaceable





Additional product data

Number of illuminants	empty
-----------------------	-------

Safety advice

- All electrical connections must be made by a qualified person.
- Caution, risk of electric shock.
- Check wall-ceiling for suitability. If uncertain, seek professional advice.

DOWNLOAD DATA

Documents and certificates		Document name
	User instruction / safety instructions	ORBIS DISC BAR
	Legal information	Safety insert G11219301
	Declarations of conformity	CE Declaration Orbis Disk
	Declarations of conformity UKCA	ORBIS DISC BAR CLICK CCT

LOGISTICAL DATA

Product code	Packaging unit (Pieces/Unit)	Dimensions (length x width x height)	Gross weight	Volume
4099854447686	Folding box 1	52 mm x 138 mm x 623 mm	743.00 g	4.47 dm ³
4099854447693	Shipping box 6	298 mm x 276 mm x 455 mm	4460.00 g	37.42 dm ³

The mentioned product code describes the smallest quantity unit which can be ordered. One shipping unit can contain one or more single products. When placing an order, for the quantity please enter single or multiples of a shipping unit.

DISCLAIMER

Subject to change without notice. Errors and omission excepted. Always make sure to use the most recent release.